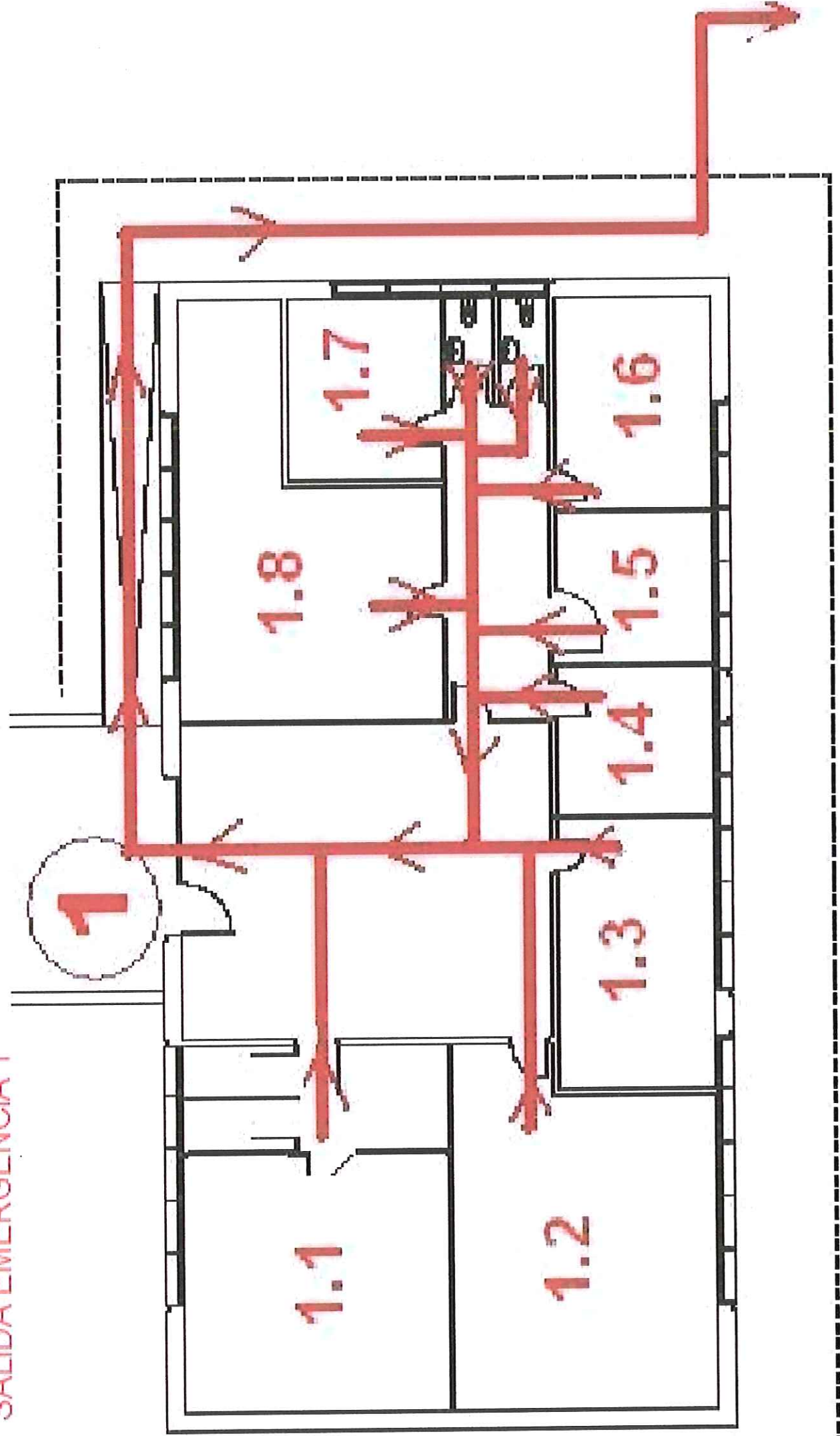
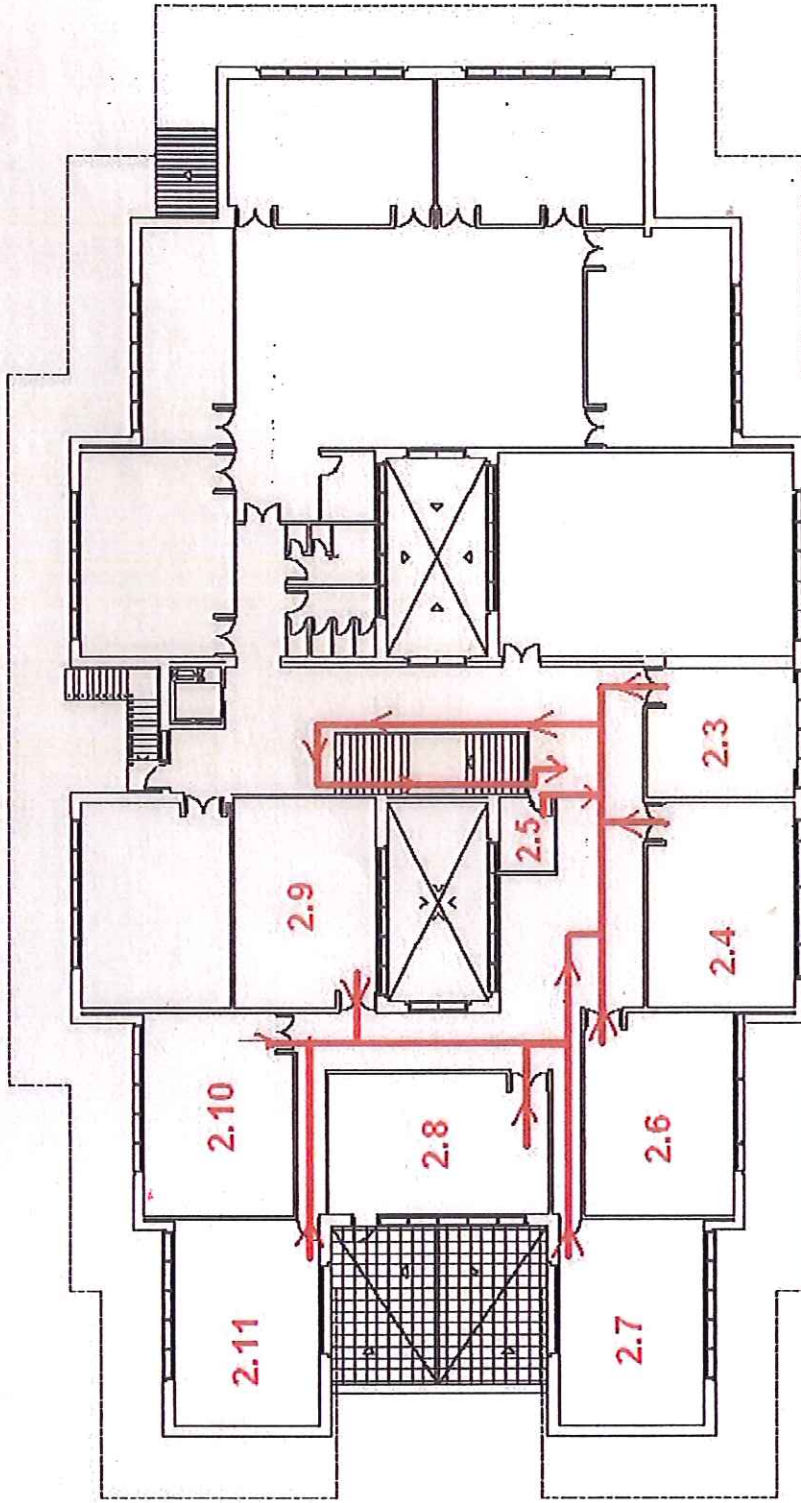


EDIFICIO ADMINISTRACIÓN

SALIDA EMERGENCIA 1

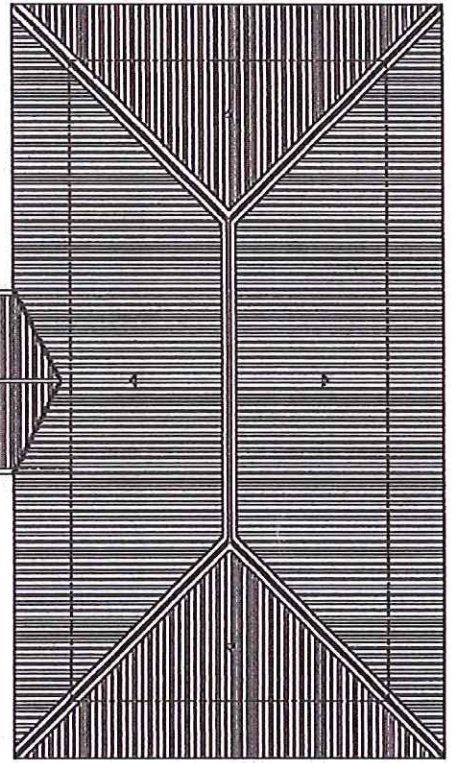


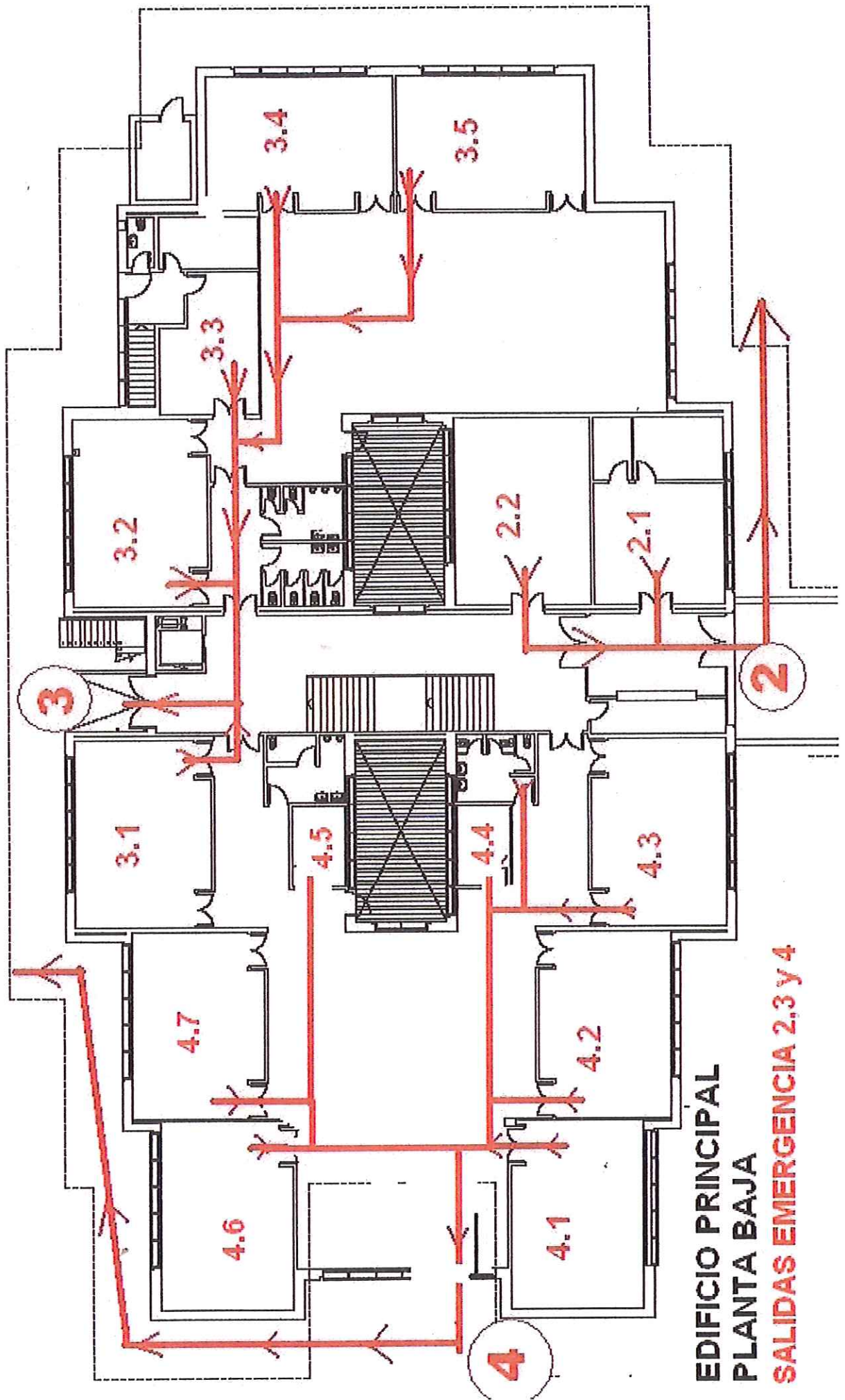


EDIFICIO PRINCIPAL

PLANTA ALTA

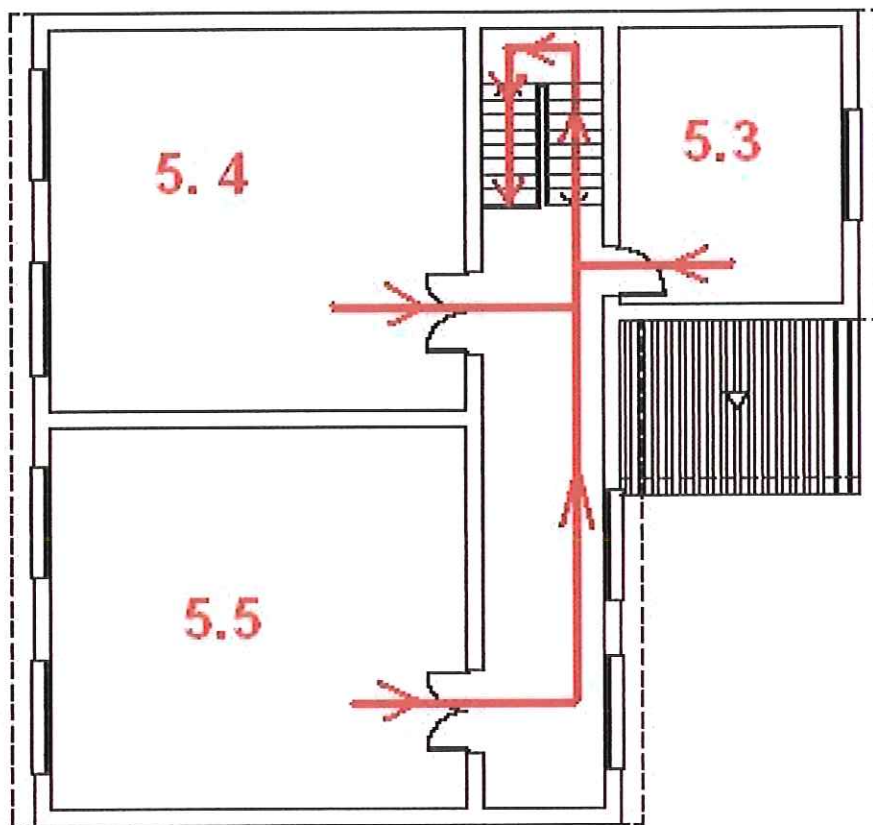
SALIDA DE EMERGENCIA N° 2



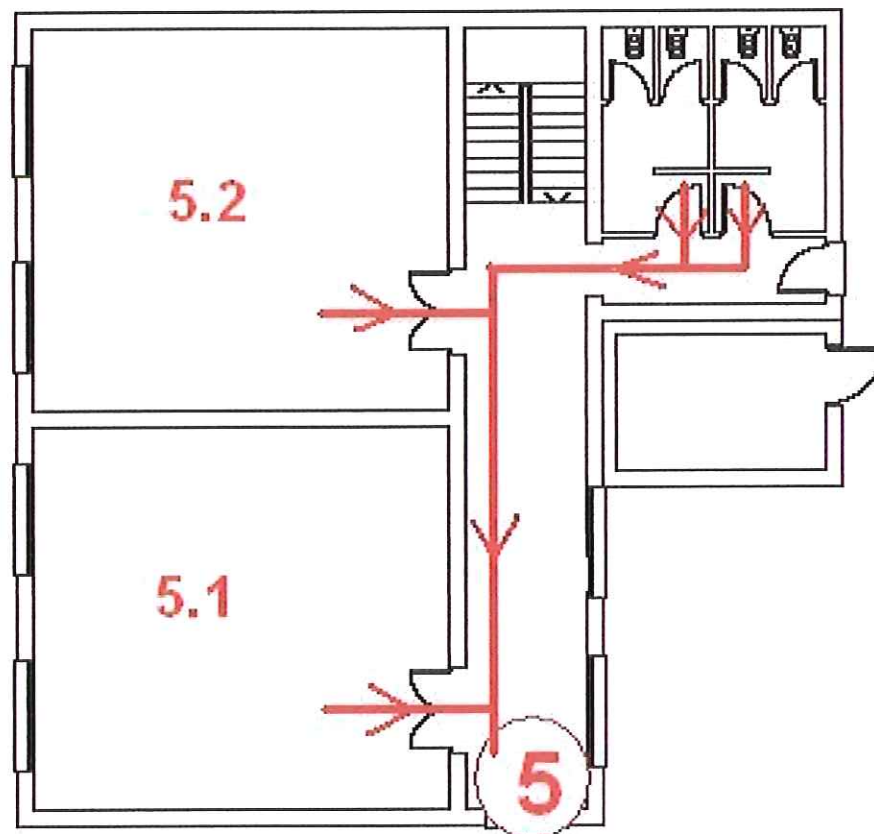


**EDIFICIO PRINCIPAL
PLANTA BAJA
SALIDAS EMERGENCIA 2,3 y 4**

ANEXO IZQUIERDO P. ALTA

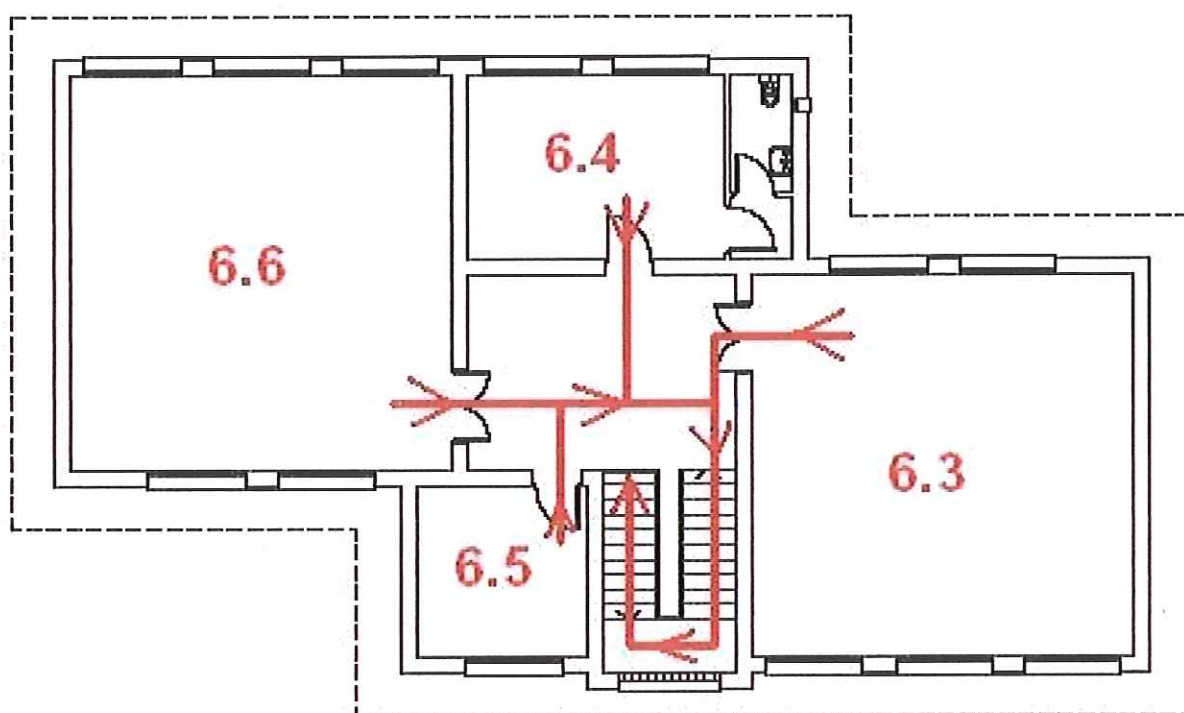


ANEXO IZQUIERDO P. BAJA

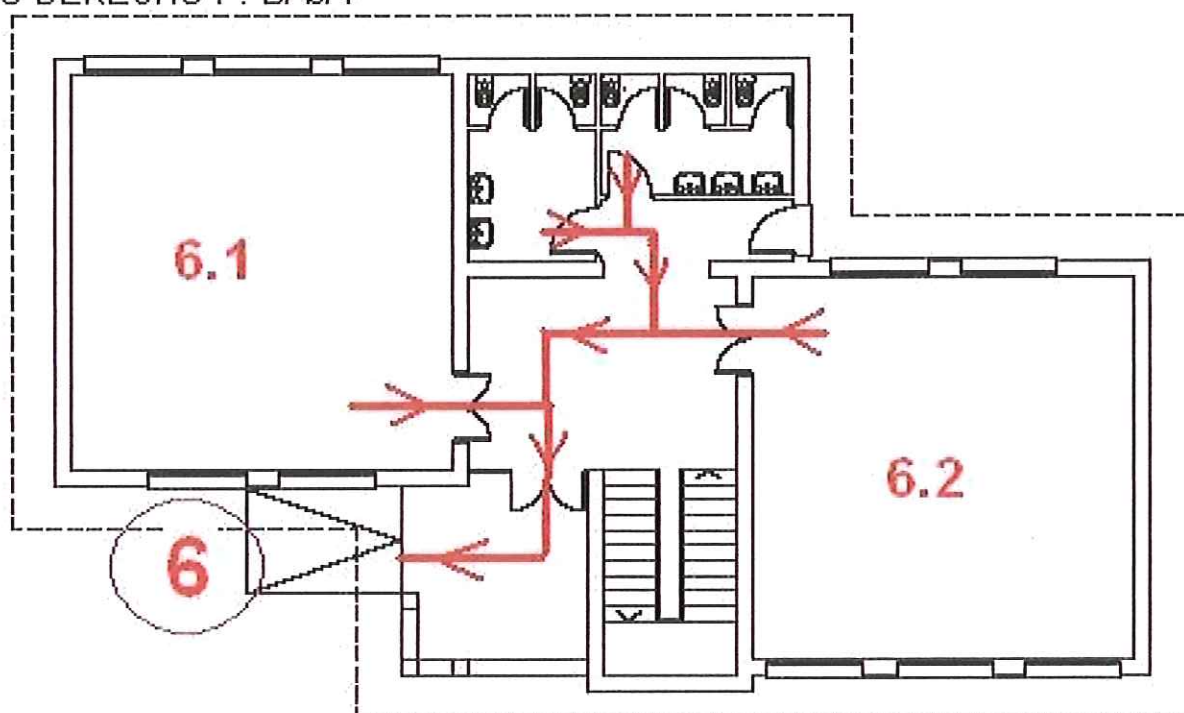


EDIFICIO "PLATERO"
SALIDA DE EMERGENCIA N° 5

ANEXO DERECHO P. ALTA



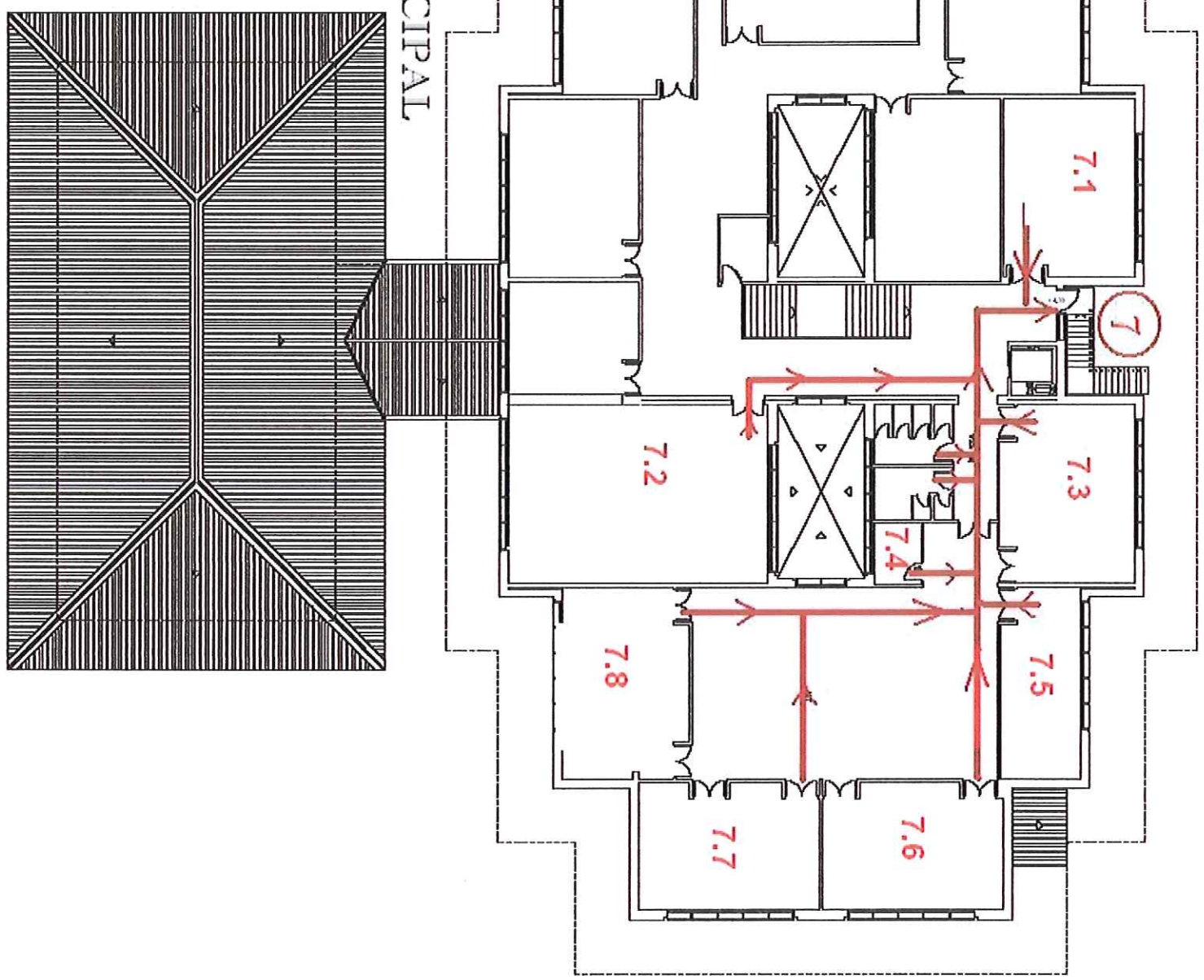
ANEXO DERECHO P. BAJA



EDIFICIO "ALEGRÍA"

SALIDA DE EMERGENCIA N° 6

EDIFICIO PRINCIPAL
PLANTA ALTA
SALIDA DE EMERGENCIA N° 7



GIMNASIO

SALIDA DE EMERGENCIA N° 8

