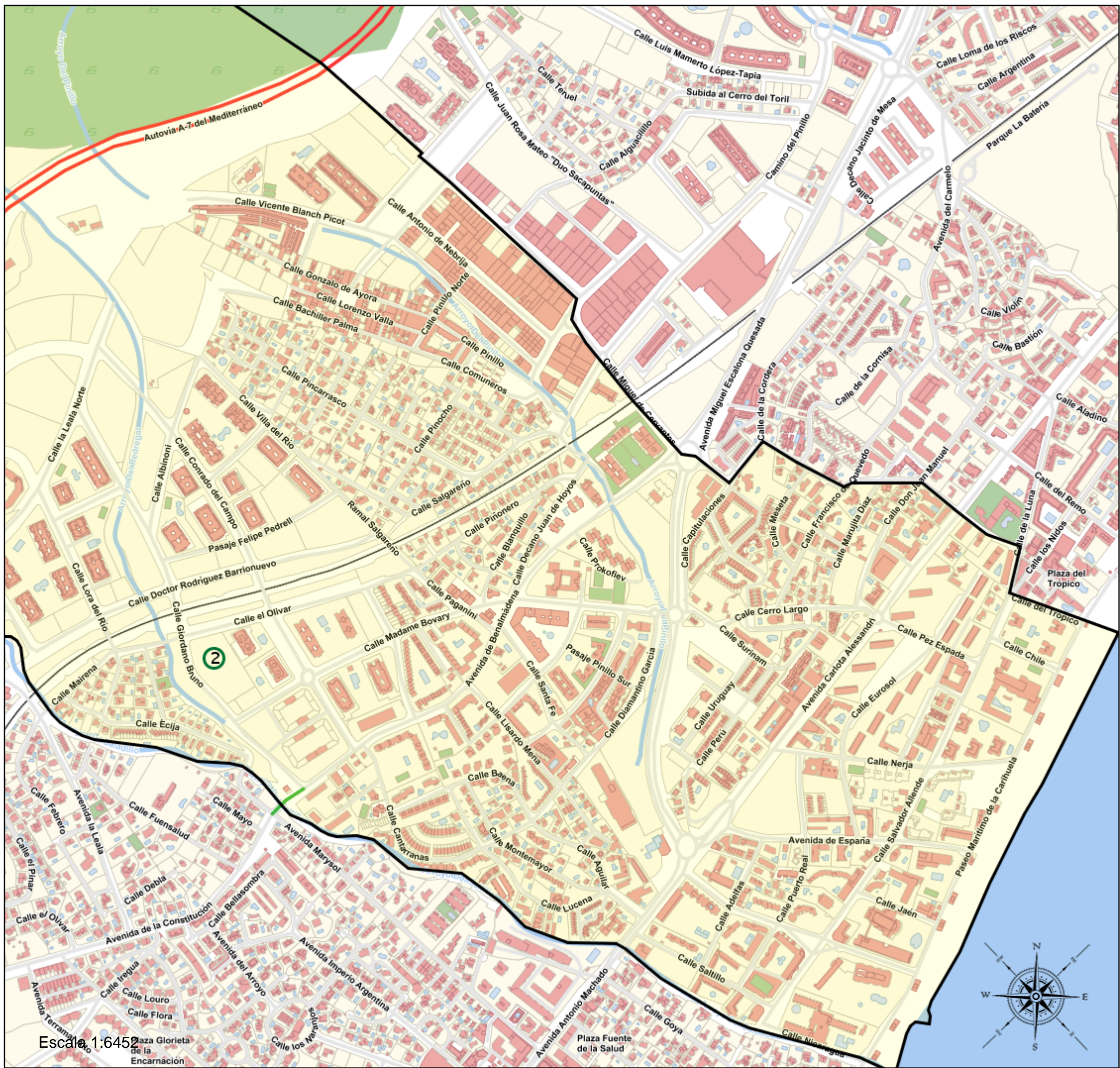
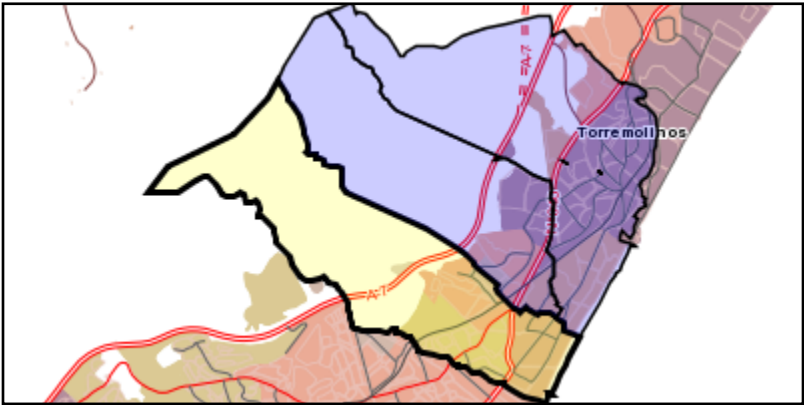


SALIDA	29008061 - Concha Méndez Cuesta
	2023/29008061/M00000000029
	Fecha: 27/02/2023

**Influencia escolar**  
**Torremolinos**

Torremolinos\_S\_01  
29901\_S\_01 (Secundaria)

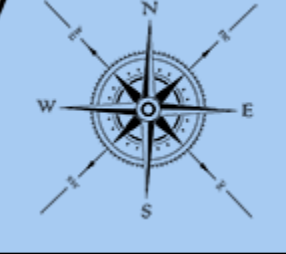
(1) 29006544 - C.D.P. El Rincón  
(2) 29008061 - I.E.S. Concha Méndez Cuesta



**Legenda**

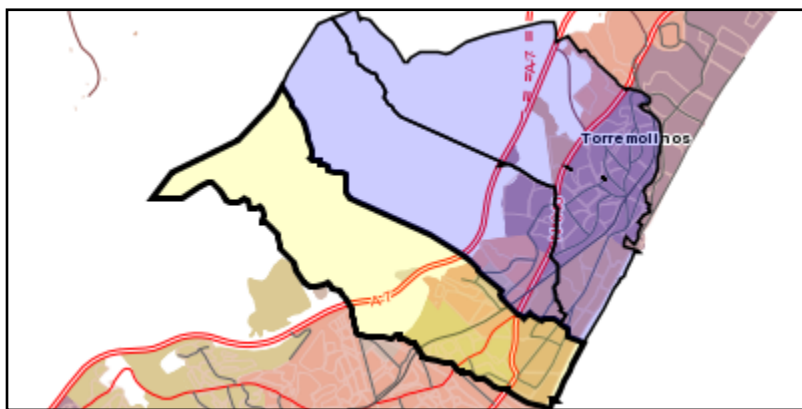
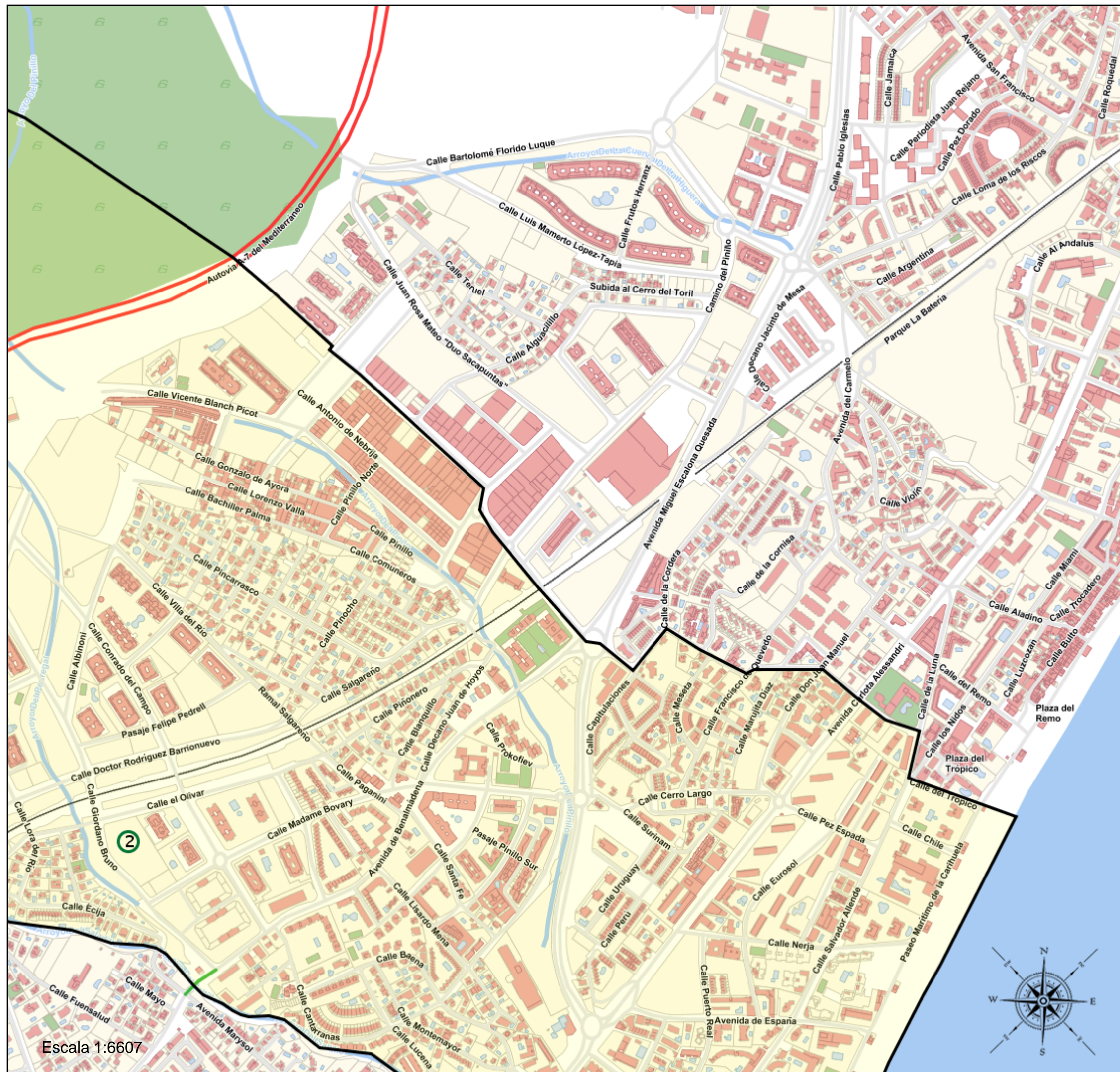
- Centros públicos
- Centros concertados

Escala 1:6452



Torremolinos\_S\_01  
29901\_S\_01 (Secundaria)

- (1) 29006544 - C.D.P. El Rincón
- (2) 29008061 - I.E.S. Concha Méndez Cuesta

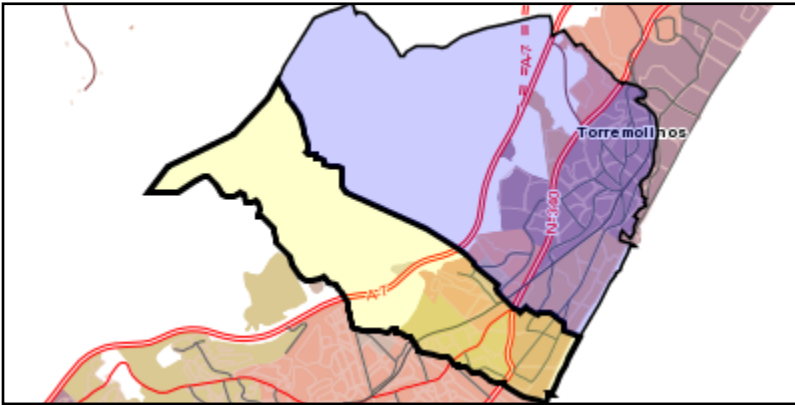


Leyenda

- Centros públicos
- Centros concertados

Escala 1:6607

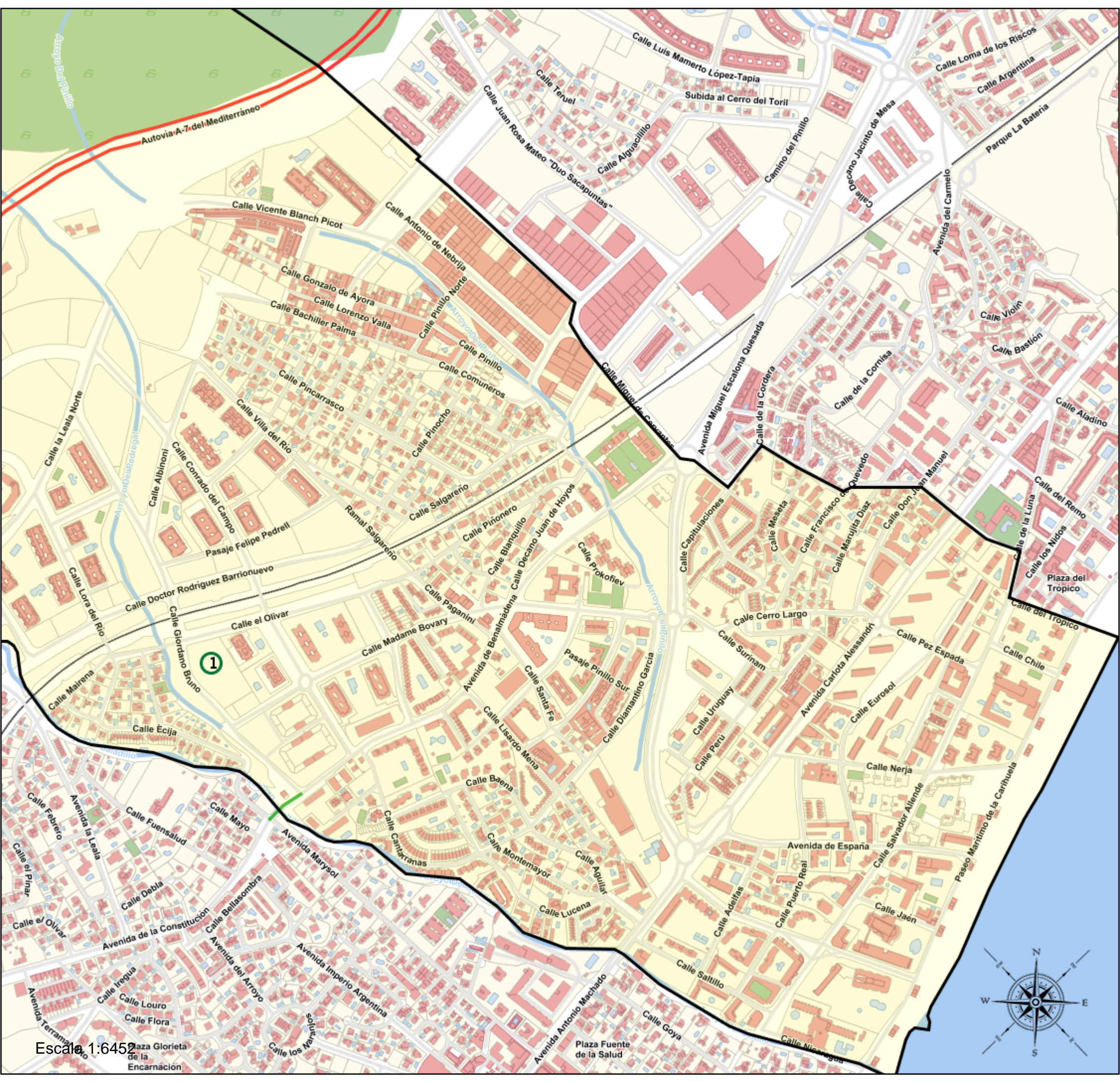
Torremolinos\_B\_03  
29901\_B\_03 (Bachillerato)  
(1) 29008061 - I.E.S. Concha Méndez Cuesta



Junta de Andalucía  
Consejería de Desarrollo Educativo y Formación Profesional

**Leyenda**

- Centros públicos
- Centros concertados

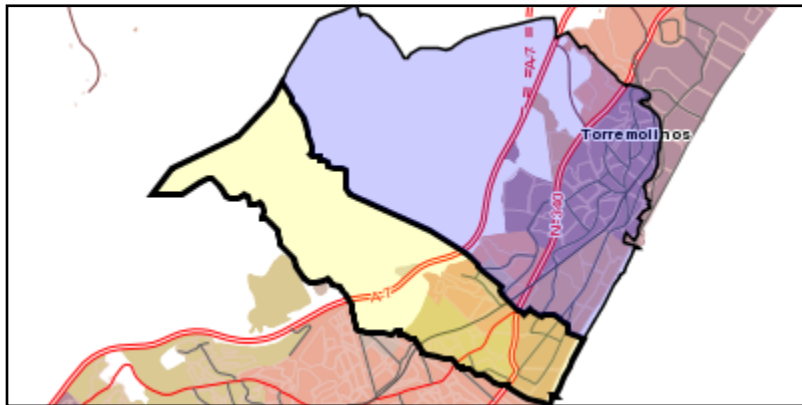
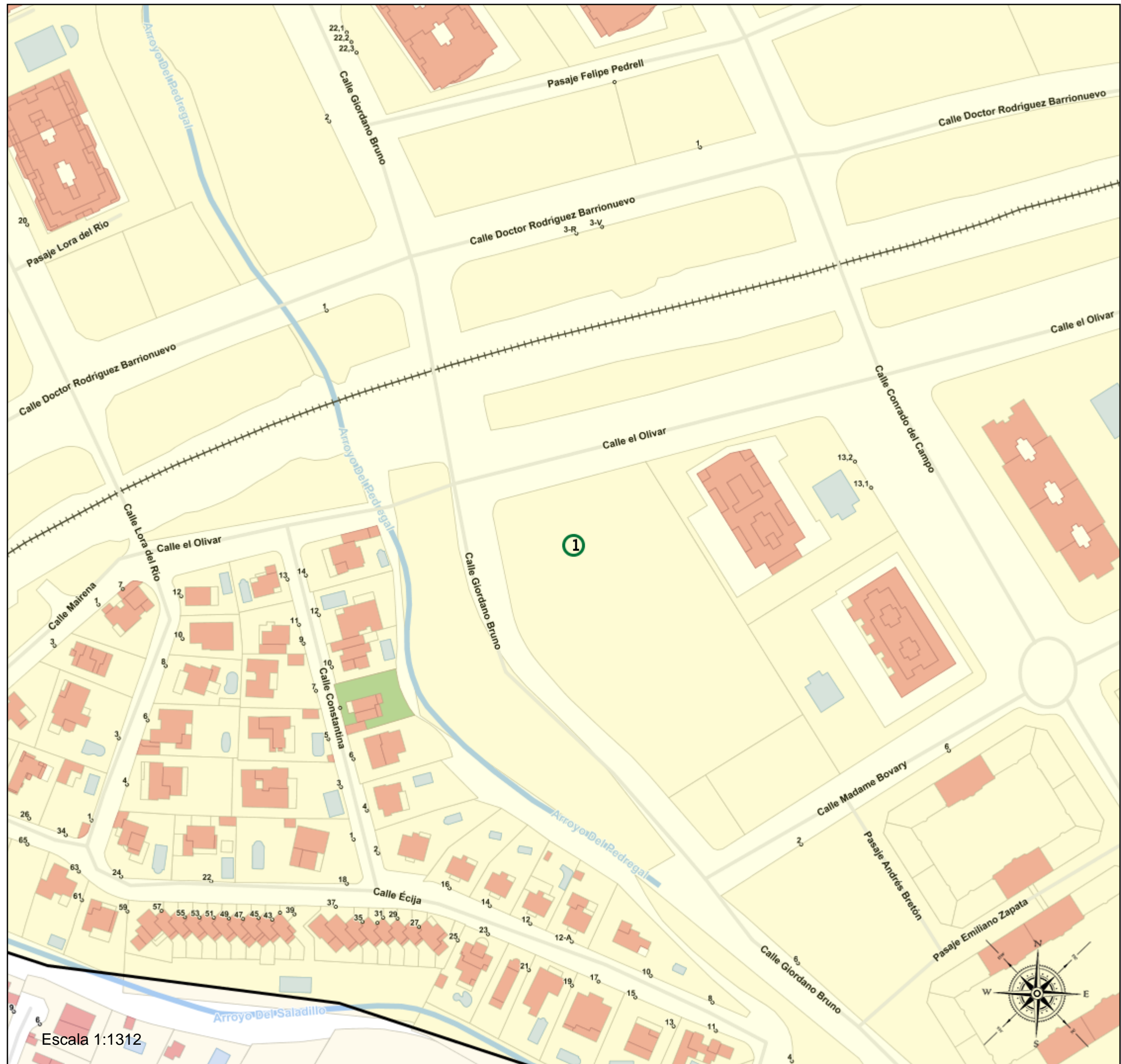


Escala 1:6452





Torremolinos\_B\_03  
29901\_B\_03 (Bachillerato)

(1) 29008061 - I.E.S. Concha Méndez Cuesta



Leyenda

-  Centros públicos
-  Centros concertados