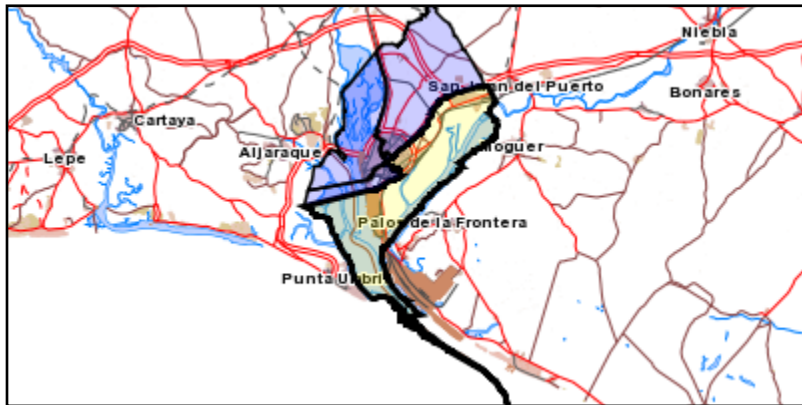
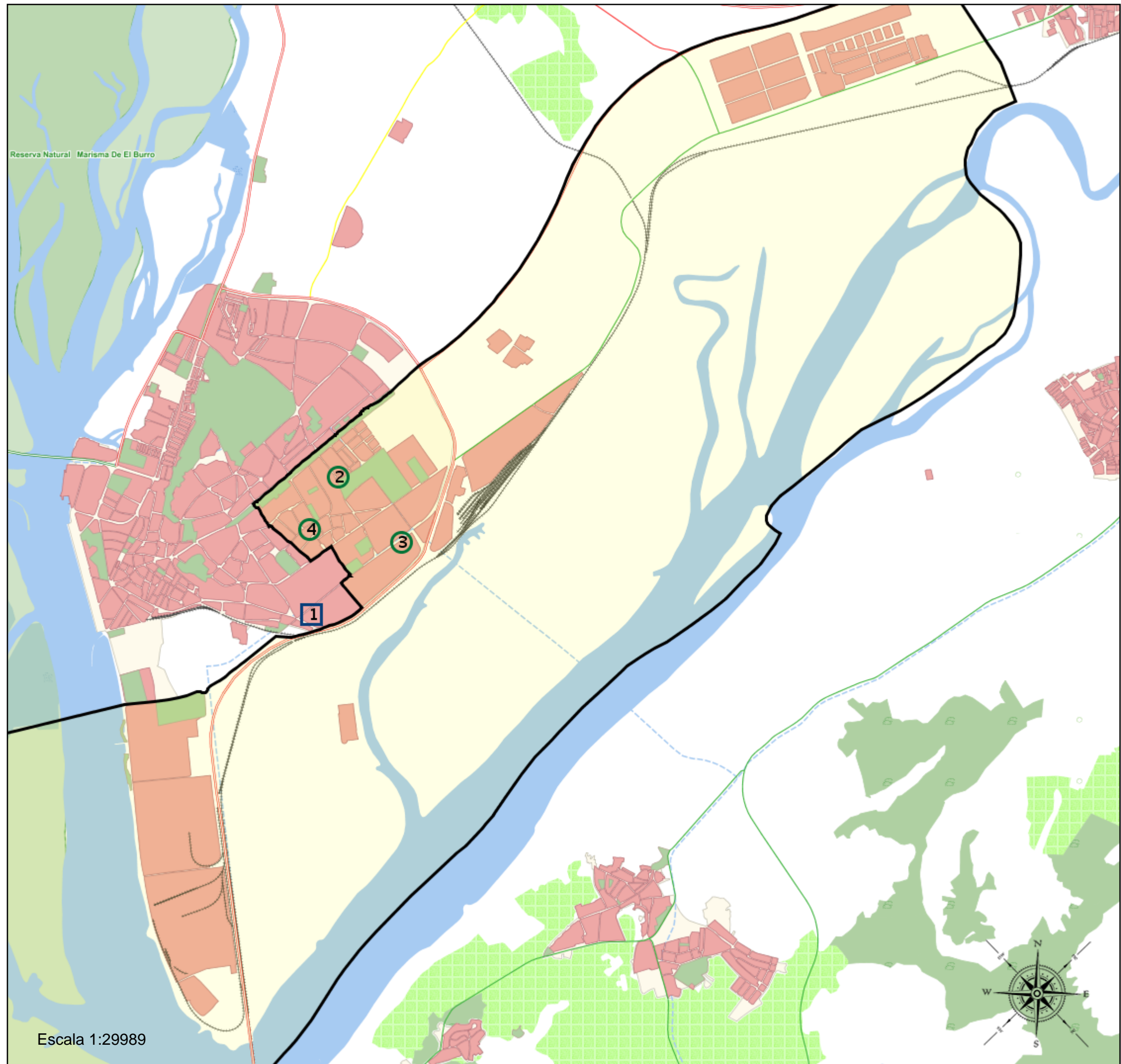


# Área de influencia escolar Huelva

Huelva\_S\_02  
ESO 02 (Secundaria)

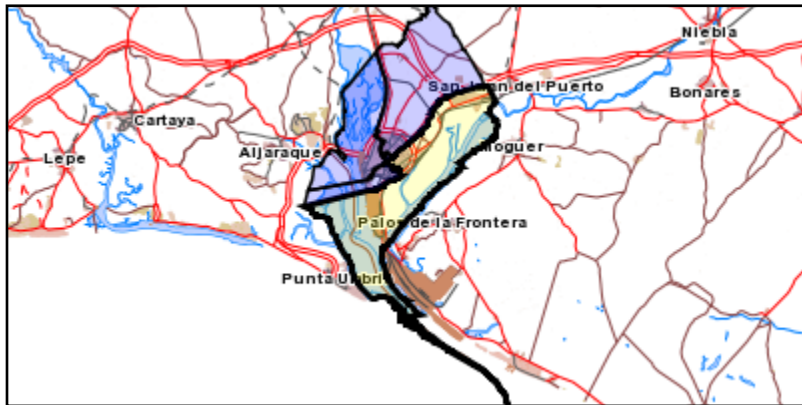
- (1) 21001740 - C.D.P. Juan Luis Vives
- (2) 21003712 - I.E.S. Fuentepiña
- (3) 21003980 - I.E.S. José Caballero
- (4) 21700356 - I.E.S. Estuaria



# Área de influencia escolar Huelva

Huelva\_S\_02  
ESO 02 (Secundaria)

- (1) 21001740 - C.D.P. Juan Luis Vives
- (2) 21003712 - I.E.S. Fuentepiña
- (3) 21003980 - I.E.S. José Caballero
- (4) 21700356 - I.E.S. Estuaria



### Leyenda

- Centros públicos
- Centros concertados

