

# Repaso 2º trimestre

## Entonación 1

♩ = 60 (60 negras por minuto = una negra cada segundo)

La rayita significa Tenuto,  
y expresa que la nota debe estar sostenida  
es decir con todo su valor

Musical notation for Entonación 1, 4/4 time signature, 60 bpm. The piece consists of three staves of music. The first staff begins with a treble clef and a 4/4 time signature. It features a series of eighth notes, some beamed together, and a half note with a tenuto mark. The second staff continues with eighth notes and a half note with a tenuto mark. The third staff features a series of eighth notes, some beamed together, and a half note with a tenuto mark.

## Entonación 2

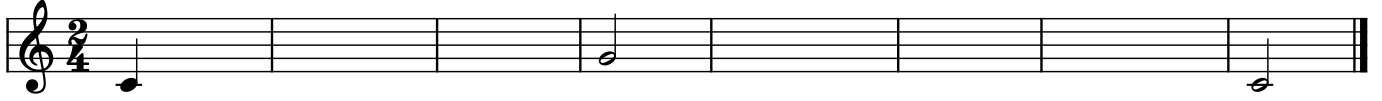
Musical notation for Entonación 2, 3/4 time signature. The piece consists of two staves of music. The first staff begins with a treble clef and a 3/4 time signature. It features a series of eighth notes, some beamed together, and a half note with a tenuto mark. The second staff continues with eighth notes, some beamed together, and a half note with a tenuto mark.

## Entonación 3

♩ = 40 (40 negras por minuto = mas lento que los segundos)

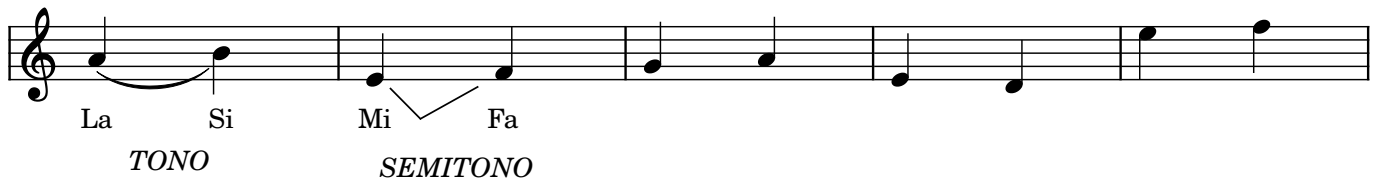
Musical notation for Entonación 3, 2/4 time signature, 40 bpm. The piece consists of three staves of music. The first staff begins with a treble clef and a 2/4 time signature. It features a series of quarter notes, some with tenuto marks. The second staff continues with quarter notes, some with tenuto marks. The third staff features quarter notes, some with tenuto marks, and a half note with a tenuto mark.

## 2 Dictados

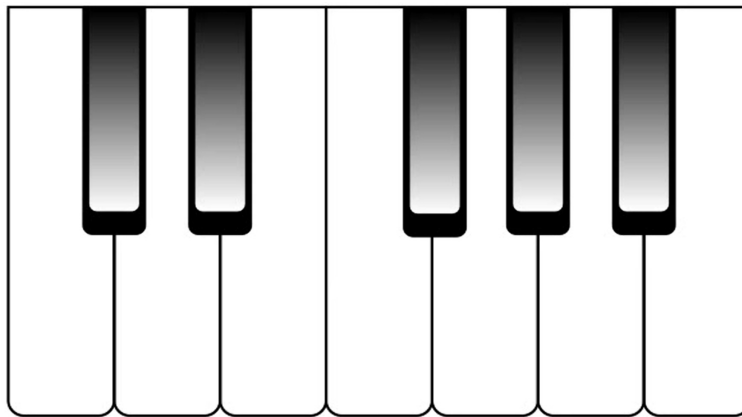


## Ejercicios de Teoría

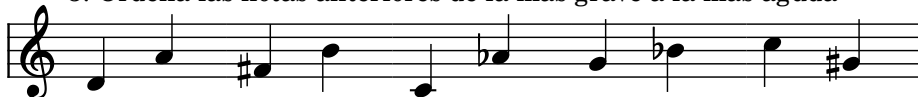
1. Indica si entre las notas hay un TONO o un SEMITONO. Puedes usar una ligadura para Tono y Triángulo p para semitono



2. Une con flechas y opcionalmente un color diferente cada nota con su correspondencia en el teclado.



3. Ordena las notas anteriores de la más grave a la más aguda



3. Ordena las notas anteriores de la más grave a la más aguda recueda usar el becuadro (♮) para recordar la nota que es NATURAL.

