



LANDSCAPES

YEAR 2

There are **two types** of natural landscapes:
inland landscapes and **coastal landscapes.**



A **peninsula** is a piece of land that is **almost** **completely** surrounded by **water**, but not quite.



An island is a piece of land that is completely surrounded by water.

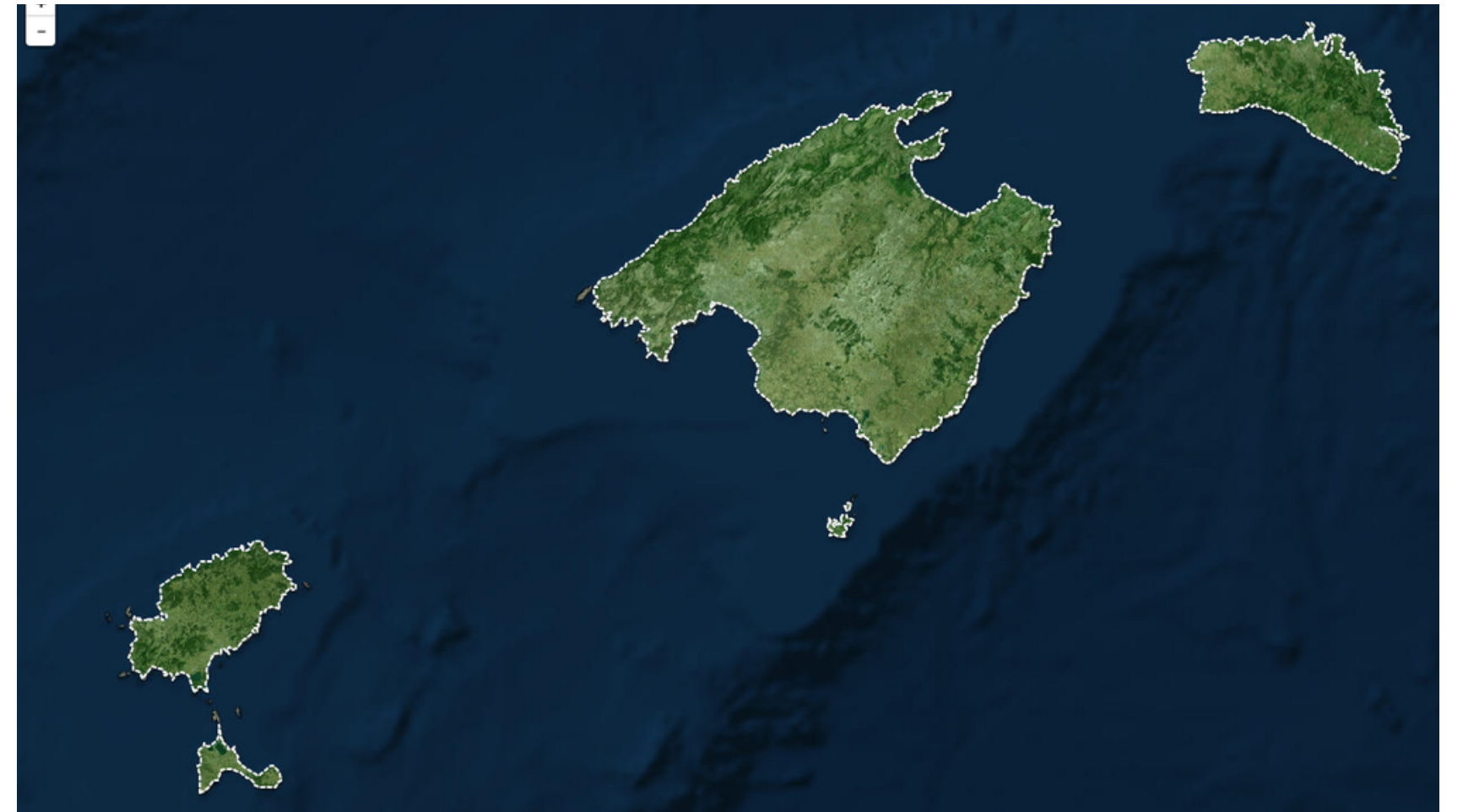


An archipelago is a group of islands.

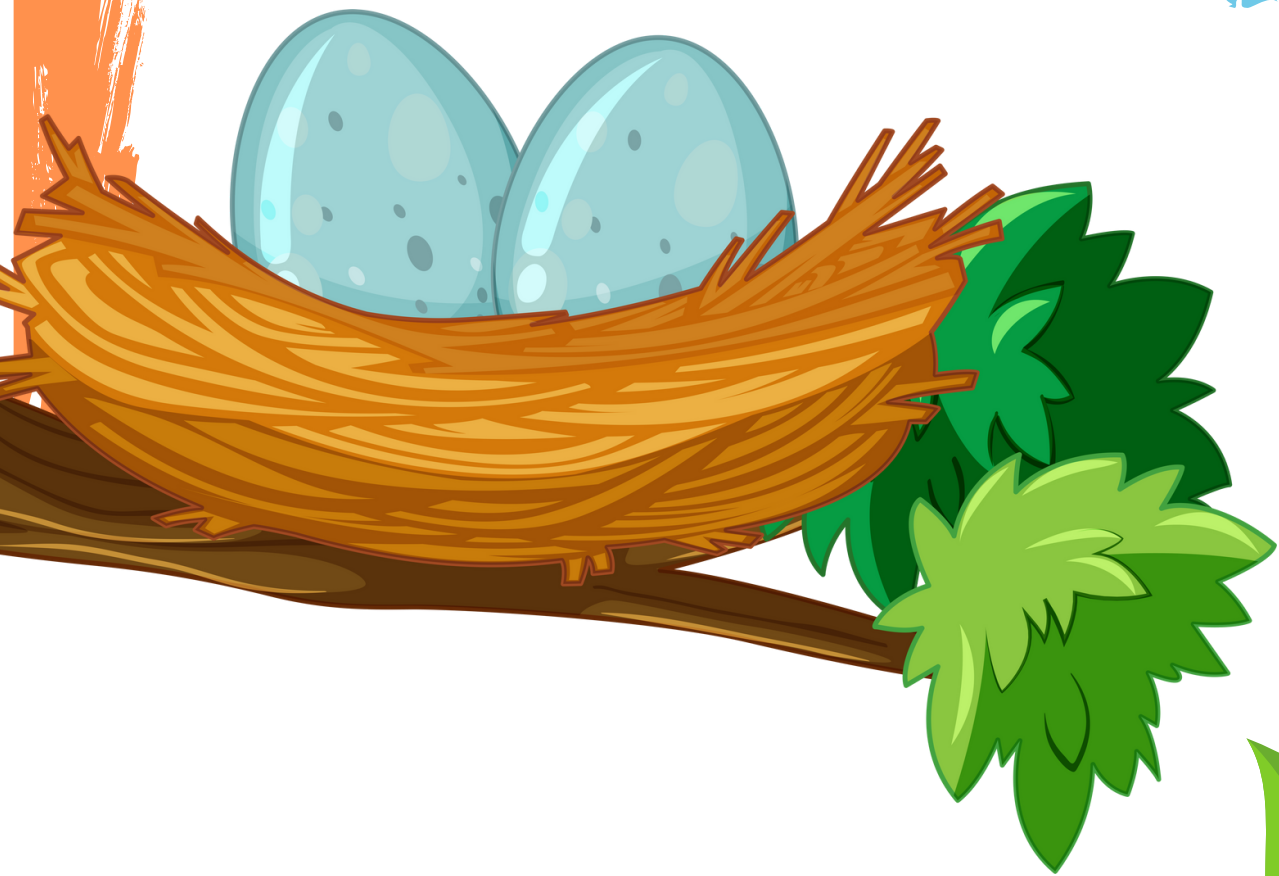
Canary Islands



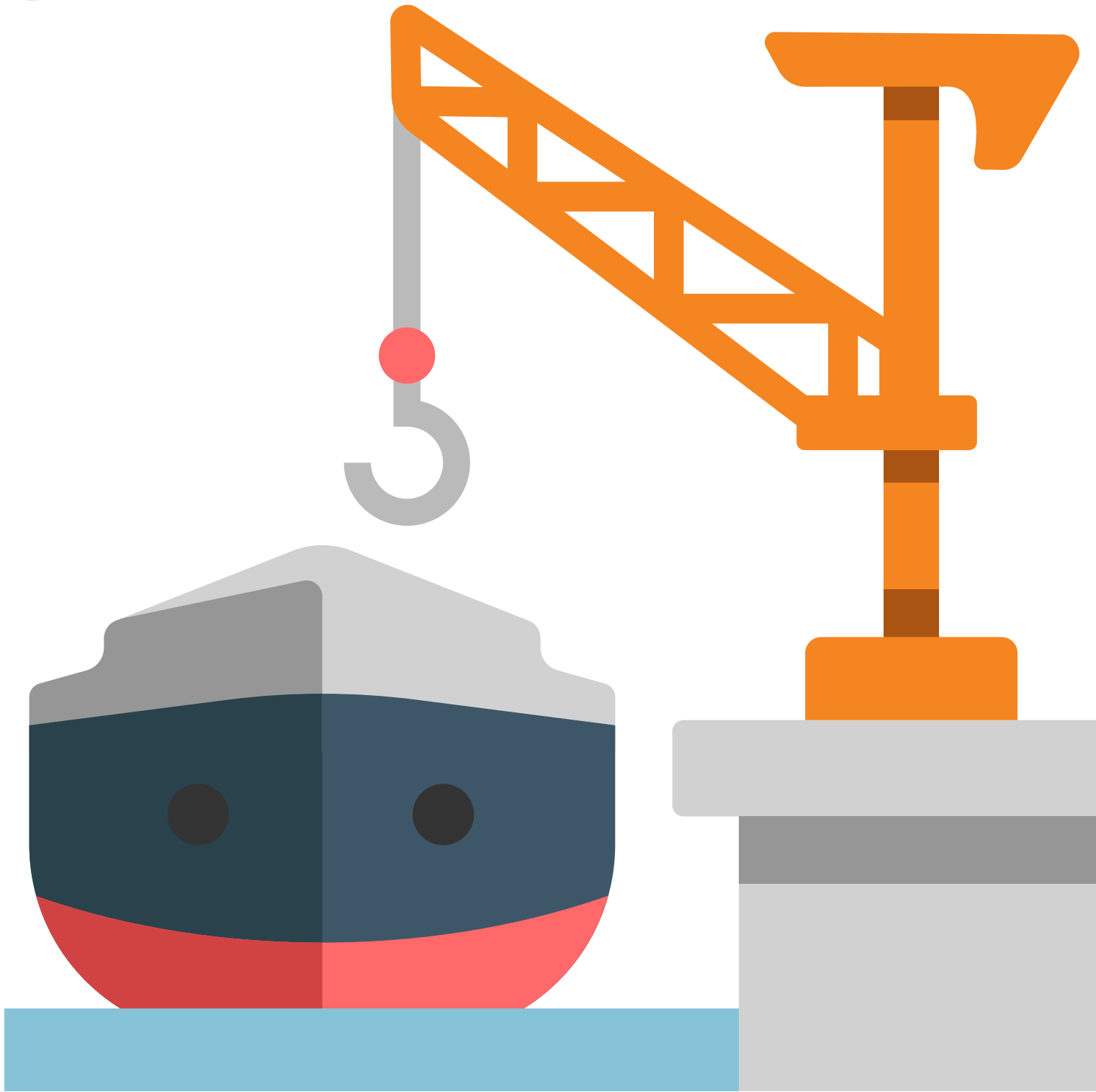
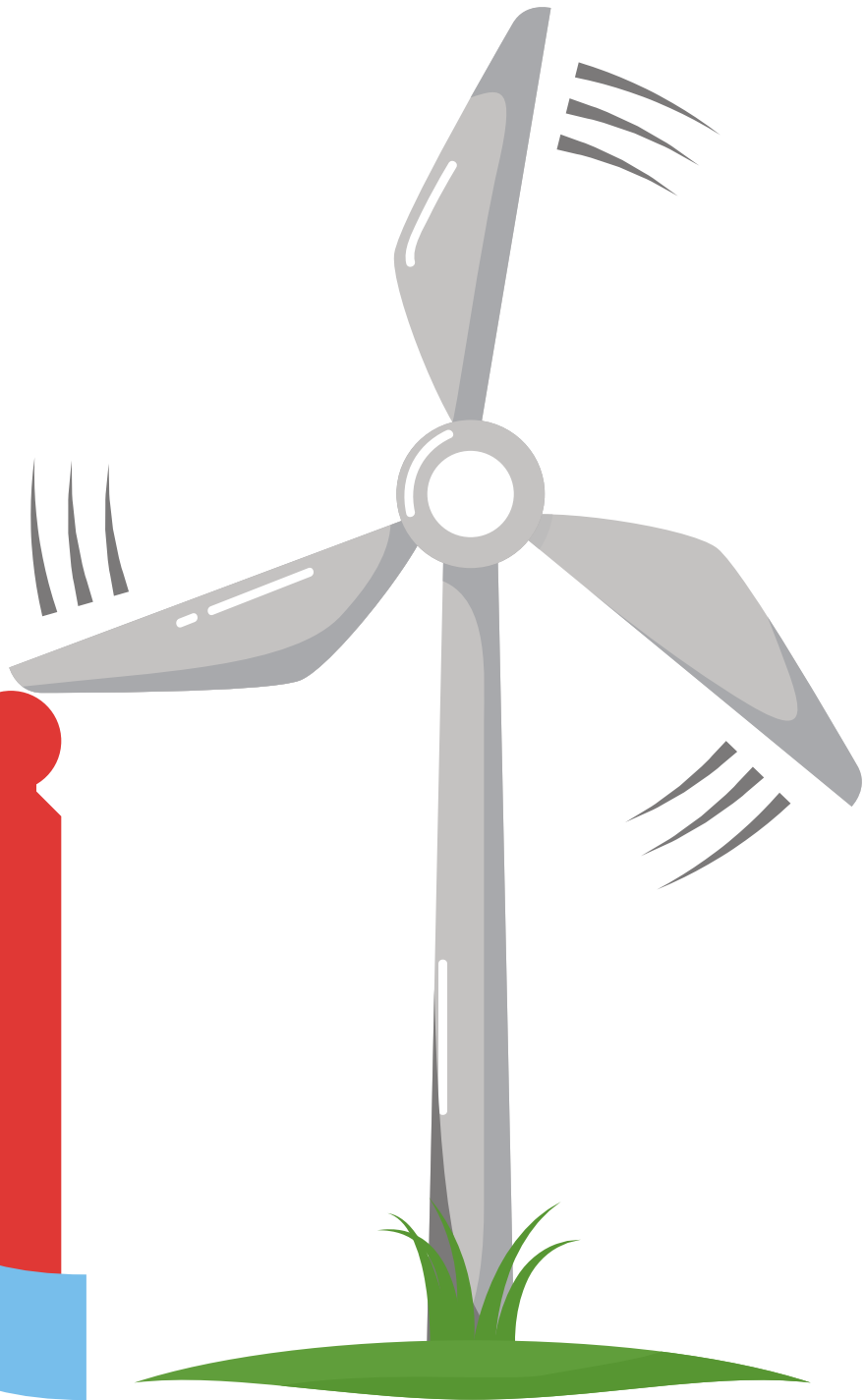
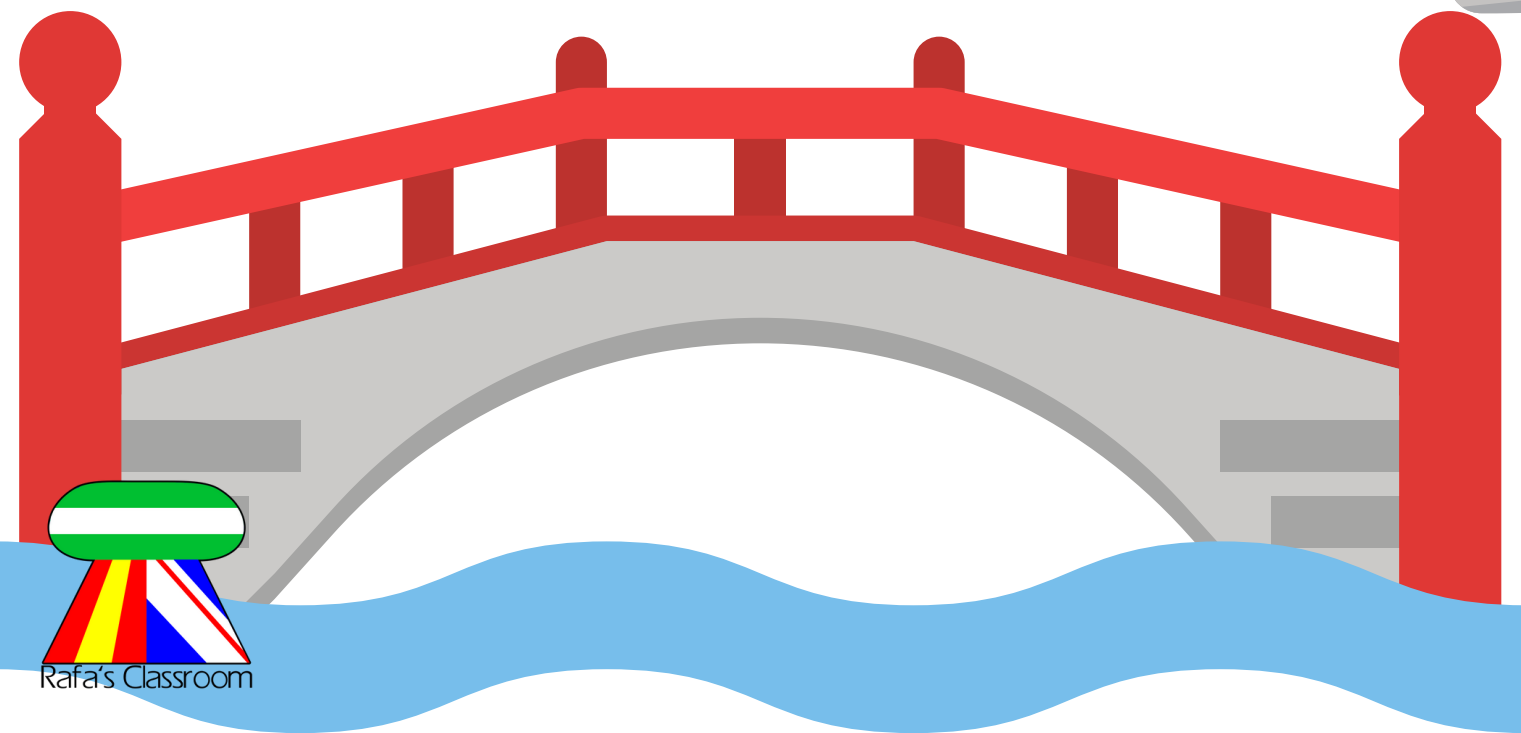
Balearic Islands



Natural features are in inland landscapes and coastal landscapes.



Humans change the landscape with artificial features.



We need to protect our environment.



Pick up rubbish.



Save water.



Plant trees and flowers.



Walk or ride your bike.