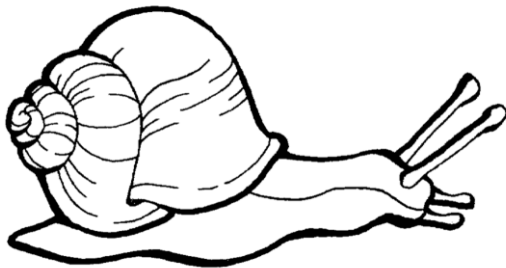
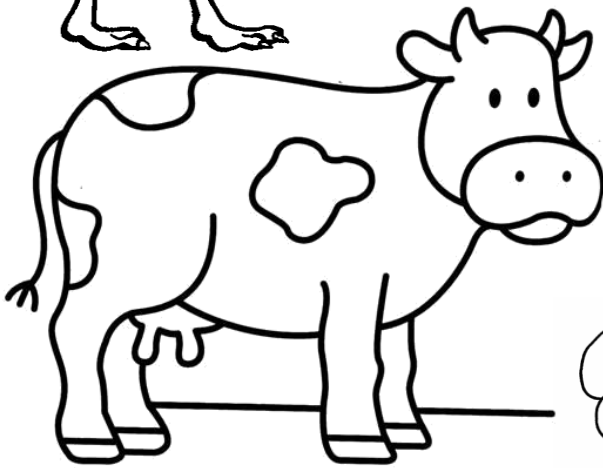
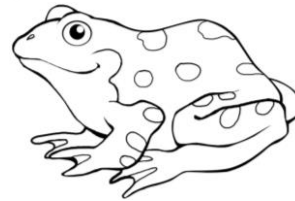
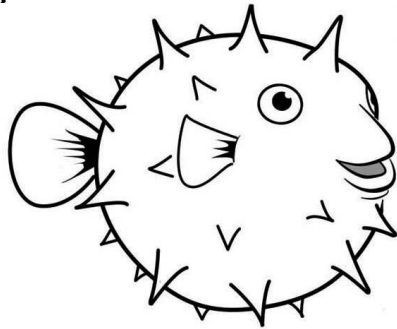
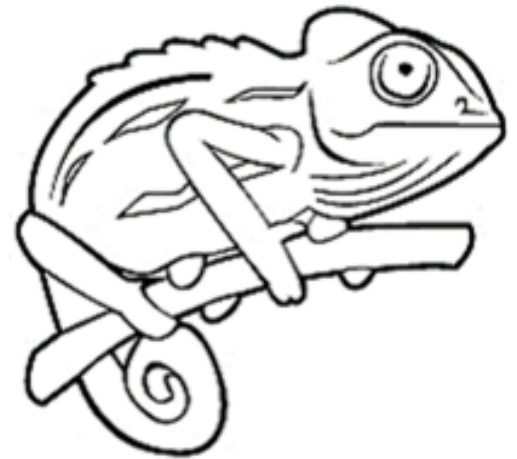
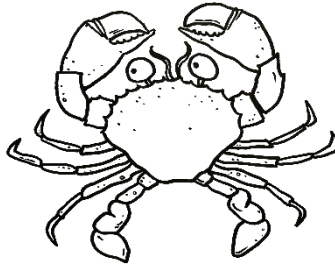


# PLANTS AND

# ANIMALS

# BOOK



This book belongs to \_\_\_\_\_

Class 2\_

Study online:

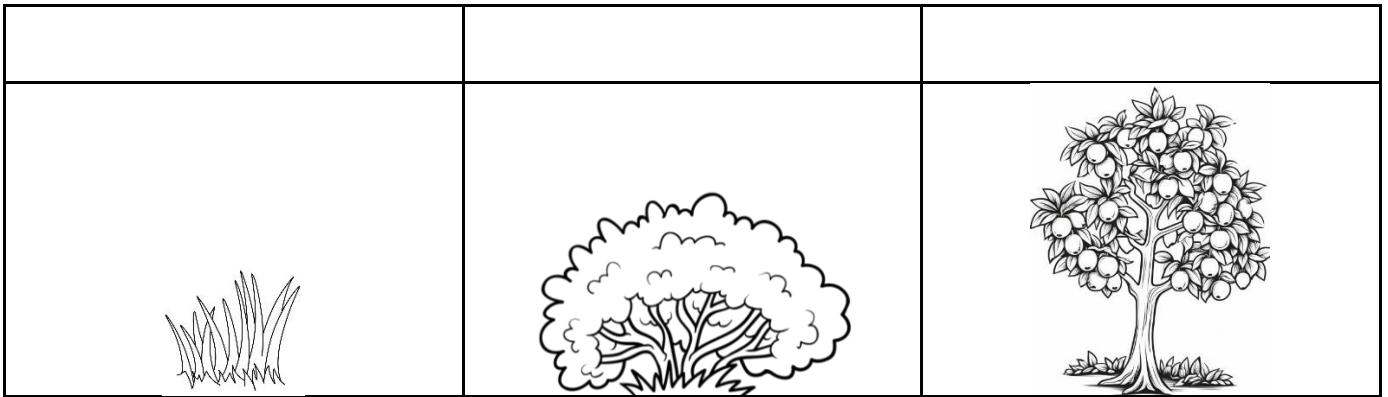


Raf's Classroom

# TYPES OF PLANTS

1. Complete.

There are 3 types of plants according to their stems:



2. Write three sentences about each type of plant.

## GRASSES

They are flexible.


## BUSHES




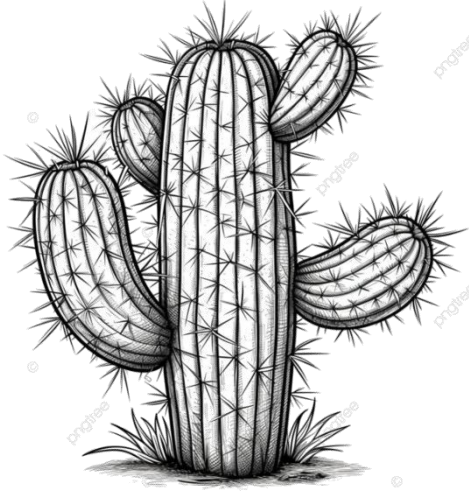
They have woody stems.


## TREES

They have trunks.

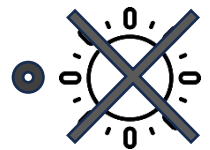

# PLANTS ADAPTATION

1. Think, write and match.

	
fern	sunflower
	
water lily	cactus

a) This plant can live in dry places. ●

\_\_\_\_\_



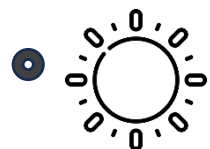
b) This plant can live in dark places. ●

\_\_\_\_\_



c) This plant can live in wet places. ●

\_\_\_\_\_



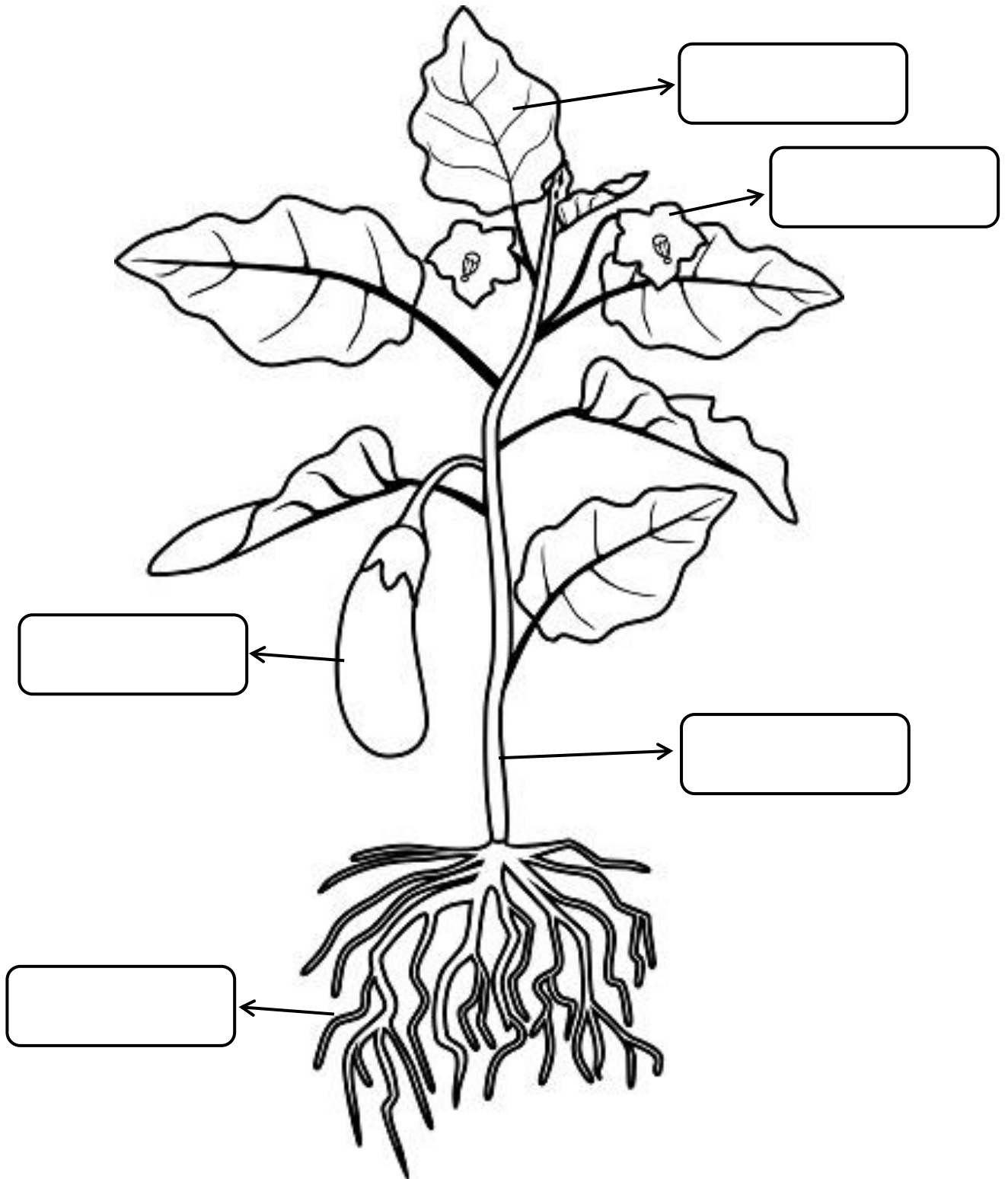
d) This plant needs a lot of sunlight. ●

\_\_\_\_\_



# PARTS OF A PLANT

1. Label the parts of this aubergine plant:

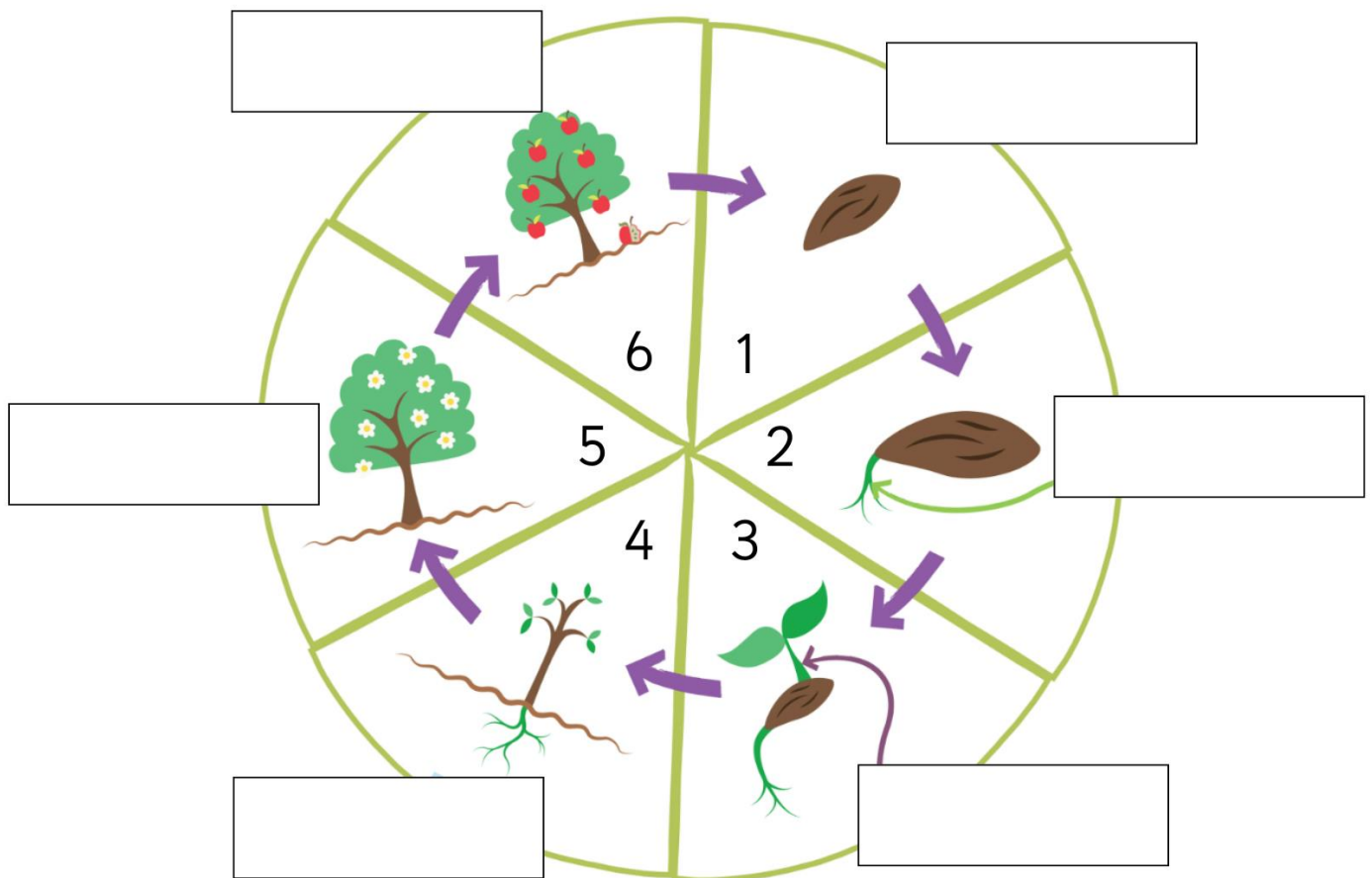


# PLANT REPRODUCTION

1. Answer.

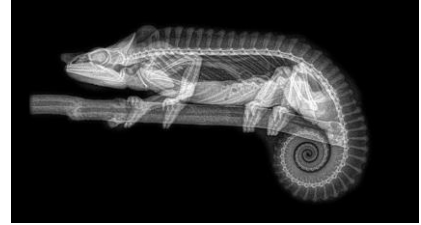
- They have got flowers: \_\_\_\_\_
- They haven't got flowers: \_\_\_\_\_
- Flowering plants use \_\_\_\_\_ to reproduce.
- Non-flowering plants use \_\_\_\_\_ to reproduce.

2. Complete the life cycle of an apple tree and answer.



- This is the life cycle of an \_\_\_\_\_ tree.
- Which part of the plant is growing in picture 2? \_\_\_\_\_.
- In picture 3, there is also a \_\_\_\_\_.
- In picture 4, there is a \_\_\_\_\_.
- In which picture can you first see the flower? \_\_\_\_\_.
- What is inside the fruit? \_\_\_\_\_.

# Vertebrates



- **Vertebrates** have got / haven't got a backbone.
- There is / there are \_\_\_\_\_ groups of vertebrate animals.

Some vertebrates are:



MAMMALS	BIRDS	FISH
REPTILES		AMPHIBIANS

# Invertebrates



- **Invertebrates** have got / haven't got a backbone.
- There is / there are \_\_\_\_\_ groups of invertebrate animals.

Some invertebrates are:

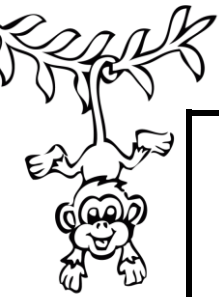


ARTHROPODS	MOLLUSCS

# Mammals

- Mammals have got a backbone, so they are \_\_\_\_\_.
- Mammals have got hair or \_\_\_\_\_.
- Mammals can be carnivores, herbivores or \_\_\_\_\_.
- Some mammals can walk, some mammals can fly and some mammals can \_\_\_\_\_.
- Mammals are born from their mummy's tummy, so they are \_\_\_\_\_.

fur – swim – omnivores  
 – viviparous –  
 vertebrate



Read and draw these mammals:

It's a mammal. It lives in the jungle. It's orange and yellow. It has got a big mouth with big teeth. It's carnivore.	It's a big mammal. It has got a very long neck. Its fur is yellow with brown spots. It's herbivore.
It's a little mammal. It has pointed ears. It lives in caves. It's carnivore, because it eats insects. Its fur is brown or black. It can fly.	It's a big mammal. It's herbivore, so it eats plants. Its fur is brown. It can jump. It carries its babies in a bag on its tummy.



# Birds

- Birds have got a \_\_\_\_\_, so they are vertebrates.
- Birds haven't got fur, they have got \_\_\_\_\_.
- Birds can be \_\_\_\_\_, herbivores or \_\_\_\_\_.
- Most birds can \_\_\_\_\_, but some birds can walk or swim.
- Birds are born from eggs, so they are \_\_\_\_\_.

backbone – fly – carnivores –  
oviparous – omnivores –  
feathers

**Write the number of the sentences in the correct place:**

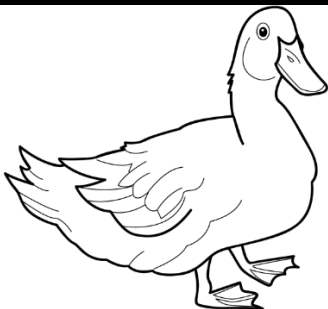
1. It can fly. Its feathers are yellow, orange or white. It can sing very well. It is small.
2. It can't fly. It can run very fast. Its legs are very strong. Its feathers are black, but its neck and legs are pink.
3. It can fly and swim. Its feathers are yellow or white.
4. It can't fly. Its feathers are black and white. It can swim. It is carnivore because it eats fish.



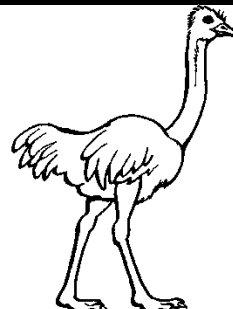
penguin



Canary bird



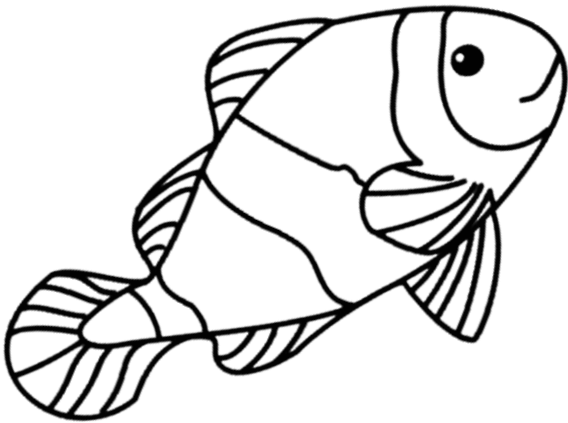
duck



ostrich

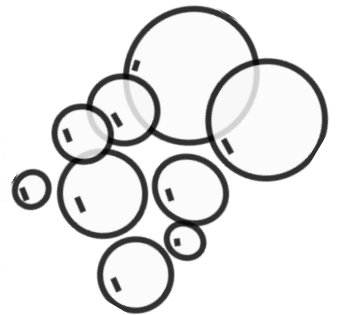
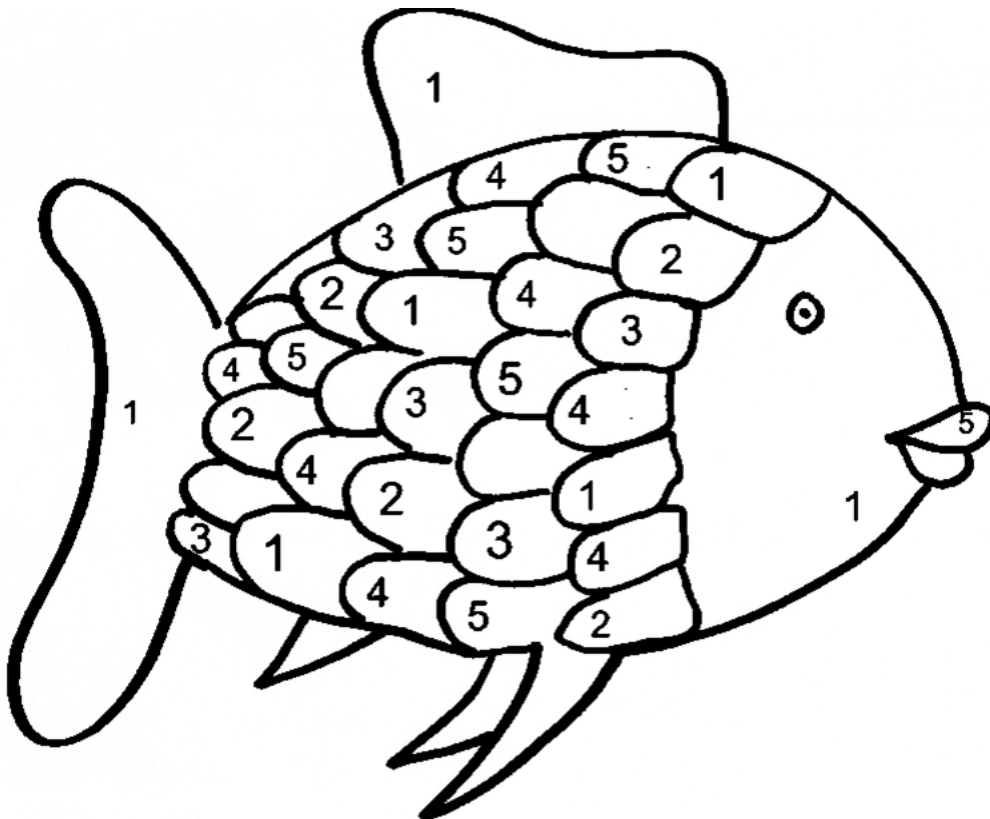


# Fish



- Fish have got a \_\_\_\_\_, so they are \_\_\_\_\_.
- Fish haven't got fur or feathers, they have got \_\_\_\_\_.
- Fish can be \_\_\_\_\_, \_\_\_\_\_ or \_\_\_\_\_.
- Fish can't walk, fish can \_\_\_\_\_.
- Fish are born from \_\_\_\_\_, so they are oviparous.

Colour this rainbow fish and answer:

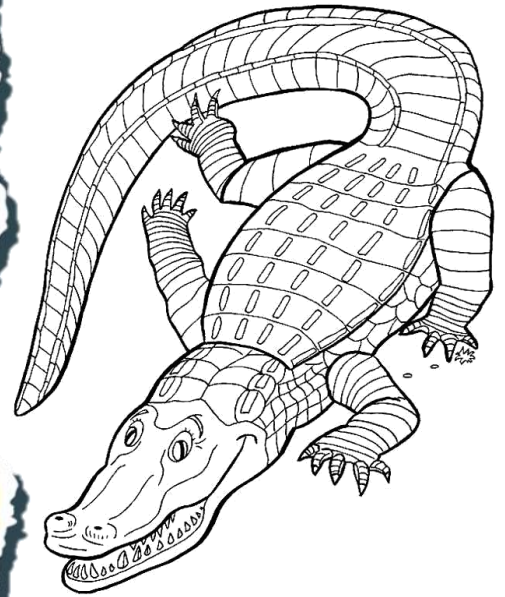


- 1 = blue
- 2 = red
- 3 = pink
- 4 = green
- 5 = yellow

What colour is the tail? It's \_\_\_\_\_.  
What colour are the fins? They are \_\_\_\_\_.  
What colour are the scales? They are \_\_\_\_\_.

# Reptiles

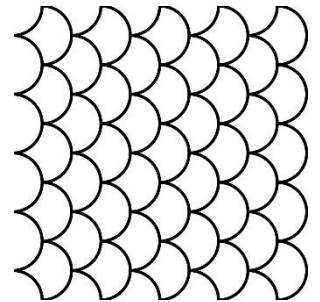
- Reptiles have got a \_\_\_\_\_, so they are \_\_\_\_\_.
- Fish haven't got fur or feathers, they have got \_\_\_\_\_.
- Reptiles can be \_\_\_\_\_, \_\_\_\_\_ or \_\_\_\_\_.
- Reptiles can slither, \_\_\_\_\_ or \_\_\_\_\_.
- Reptiles are born from eggs, so they are \_\_\_\_\_.



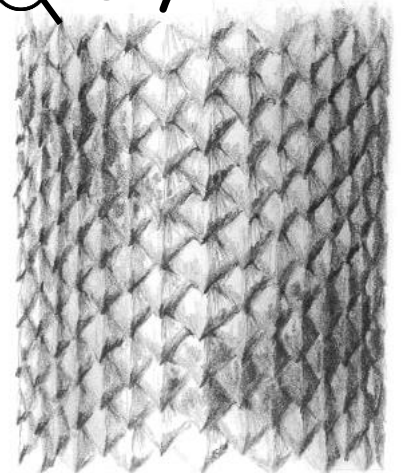
Colour the happy or the sad tortoise:

		1. Reptiles have got feathers.
		2. Reptiles are oviparous.
		3. Reptiles have got dry skin.
		4. Reptiles lay their eggs on land.
		5. Reptiles have got scales.
		6. Reptiles can't swim.
		7. Reptiles can slither.
		8. Reptiles breathe with their lungs.
		9. Reptiles breathe with their gills.
		10. Reptiles are herbivores.

Scales

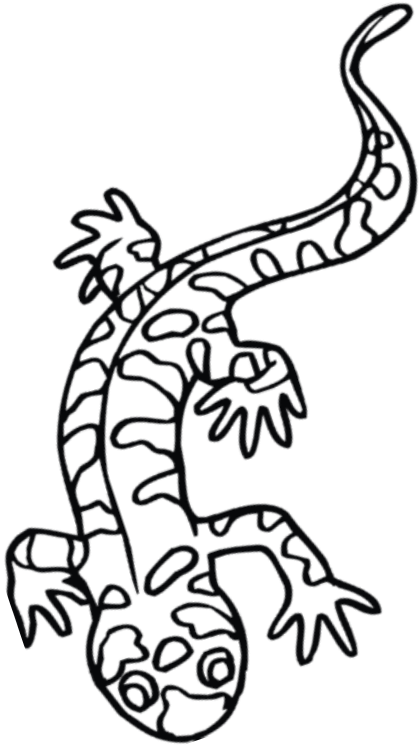


Dry skin



They lay eggs on land.

# Amphibians

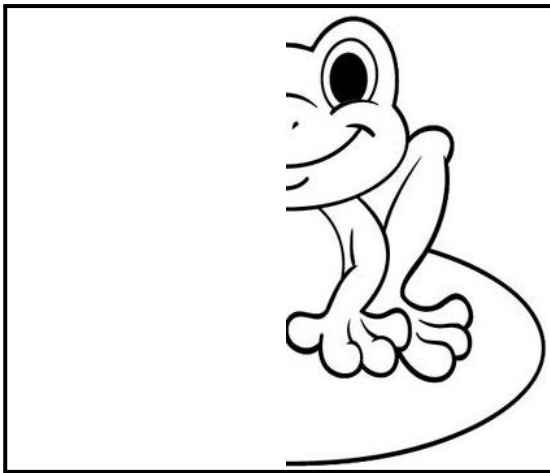


- - Amphibians have got a backbone, so they are \_\_\_\_\_.
- - Amphibians have got \_\_\_\_\_ skin.
- - Amphibians are all carnivores.
- - Amphibians lay eggs in \_\_\_\_\_.
- - Amphibians can walk and \_\_\_\_\_.
- - Amphibians are born from \_\_\_\_\_, so they are \_\_\_\_\_.
- \_\_\_\_\_



Finish the picture of these amphibians and colour:

Frog



Salamander

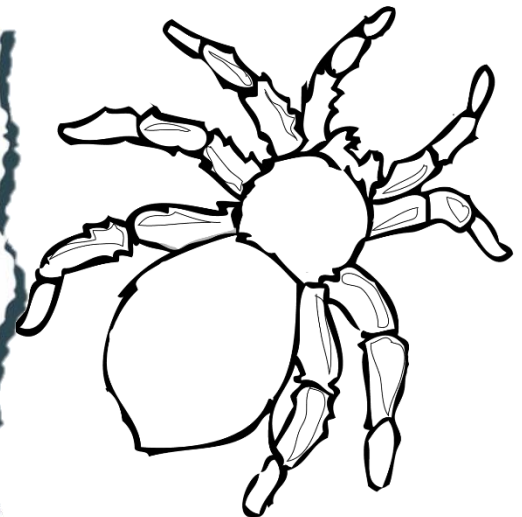


Toad



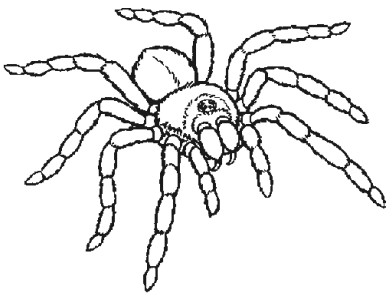
# Arthropods

- Arthropods haven't got a backbone, so they are \_\_\_\_\_.
- Arthropods have got \_\_\_\_\_ bodies and exoskeleton.
- Arthropods can be carnivores, herbivores and \_\_\_\_\_.
- Arthropods can walk, \_\_\_\_\_ and \_\_\_\_\_.
- Arthropods are born from \_\_\_\_\_, so they are \_\_\_\_\_.



segmented – omnivores –  
eggs – invertebrates – swim  
– oviparous – jump

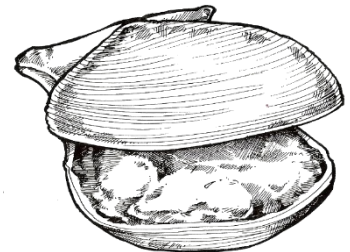
Circle the arthropods and cross the rest of the animals:



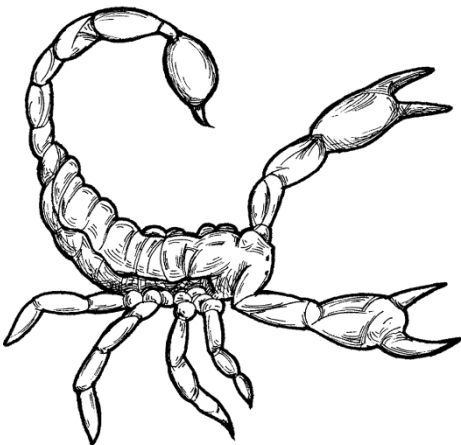
Spider



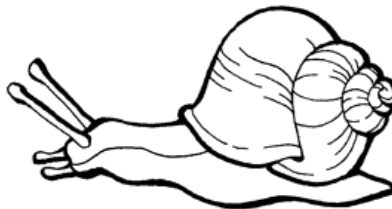
Shrimp



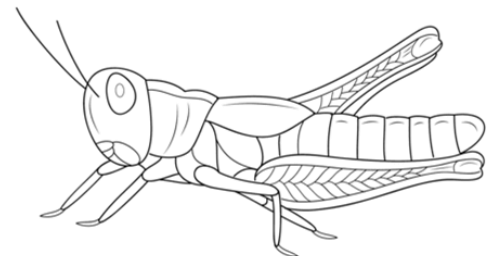
Clam



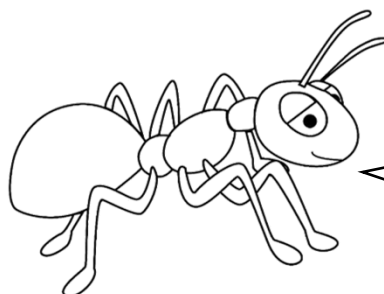
Scorpion



Snail



Grasshopper



Some arthropods  
have antennae!

# Molluscs

- Molluscs haven't got a backbone, so they are \_\_\_\_\_.

- Molluscs have got \_\_\_\_\_ bodies.

Some molluscs have got a shell.

- Molluscs can be carnivores,

\_\_\_\_\_ or \_\_\_\_\_.

- Molluscs can slither or \_\_\_\_\_.

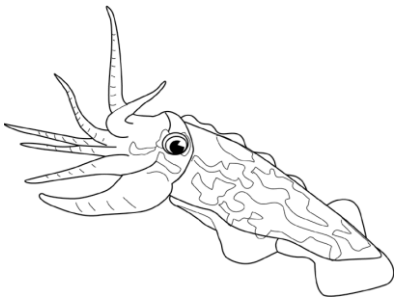
- Molluscs are born from \_\_\_\_\_, so

they are \_\_\_\_\_.

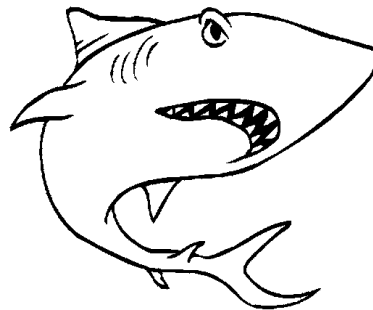
oviparous – eggs – soft –  
invertebrates – herbivores –  
swim – omnivores



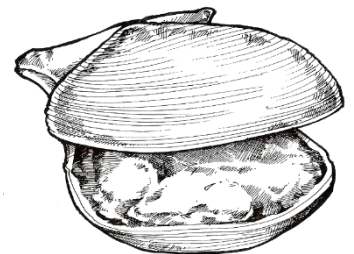
Circle the molluscs and cross the rest of the animals:



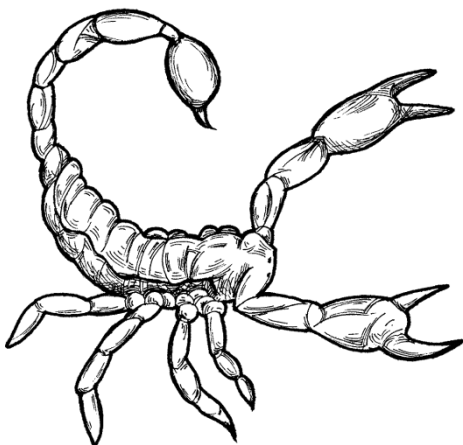
Cuttlefish



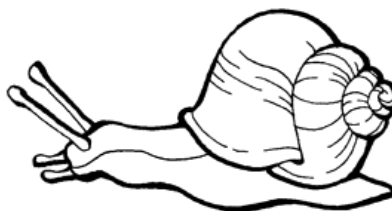
Shark



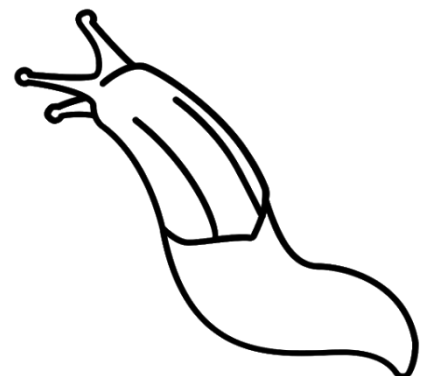
Clam



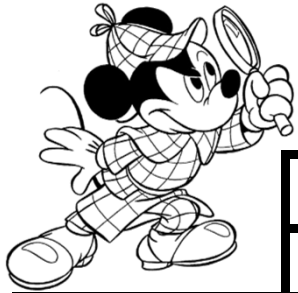
Scorpion



Snail



Slug



# ANIMALS

	VERTEBRATES					INVERTEBRATES	
	MAMMALS	BIRDS	FISH	REPTILES	AMPHIBIANS	ARTHROPODS	MOLLUSCS
Have they got a backbone?							
Special parts of their bodies.							
Are they carnivores, herbivores or omnivores?							
How do they move?							
Are they viviparous or oviparous?							

BINGO 1

BINGO 2

BINGO 3
