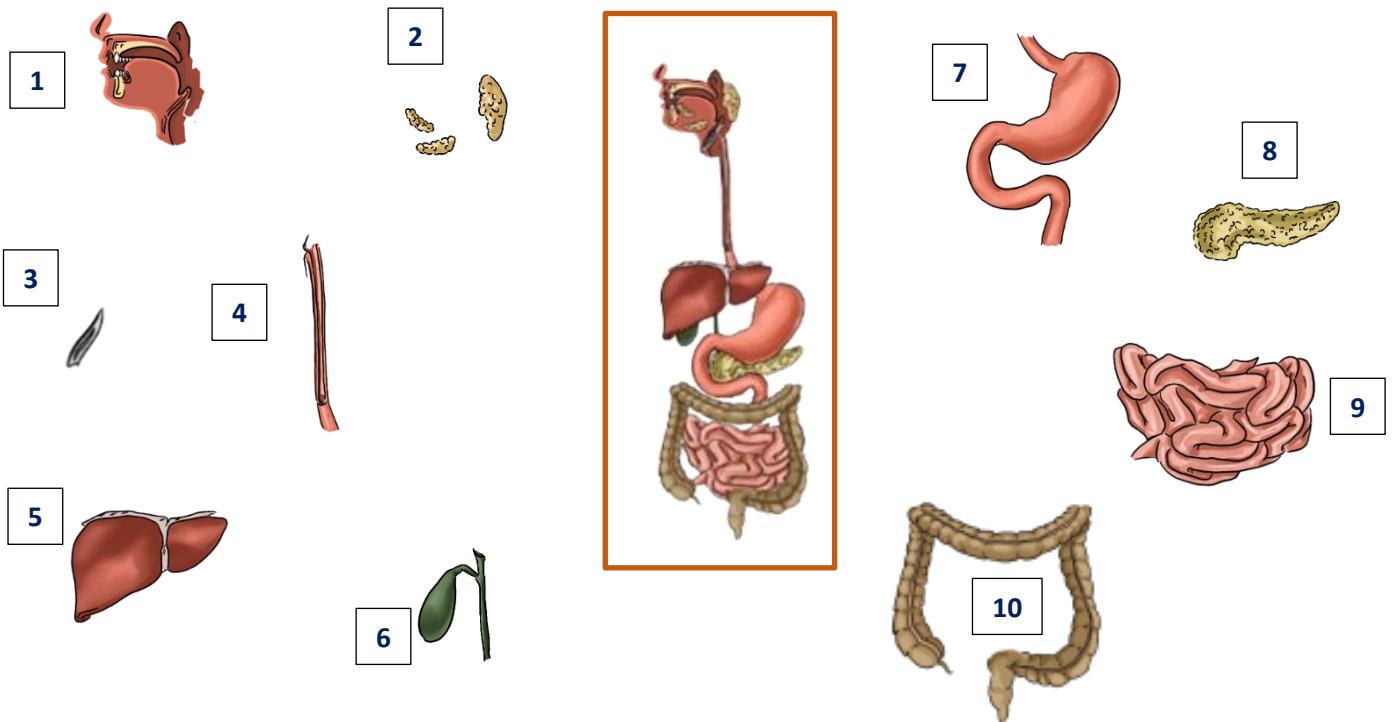


1.- NAME THE TEN PARTS OF THE DIGESTIVE SYSTEM:



2.- THE DIGESTIVE TRACT - Match the different parts of the digestive tract to the correct information

<p>PHARYNX _____</p> <p>EPIGLOTTIS _____</p> <p>ESOPHAGUS _____</p> <p>STOMACH _____</p> <p>SMALL INTESTINE _____</p> <p>_____</p> <p>LARGE INTESTINE _____</p> <p>_____</p>	<p>1 It is about 6 metres long</p> <p>2 the internal walls have folds that secrete the gastric juices</p> <p>3 It has 3 parts: duodenum, jejunum and ileum</p> <p>4 It has 3 parts: cecum, colon, rectum</p> <p>5 It breaks down food and absorbs nutrients</p> <p>6 it is about 1.5 metres long</p> <p>7 the waste solidifies until it is evacuated</p> <p>8 a cavity shared by the respiratory and the digestive systems</p> <p>9 a small, flexible cartilage that prevents food from reaching the respiratory tract</p> <p>10 muscular tube that contracts in a synchronized fashion to move food down</p>	
--	---	--

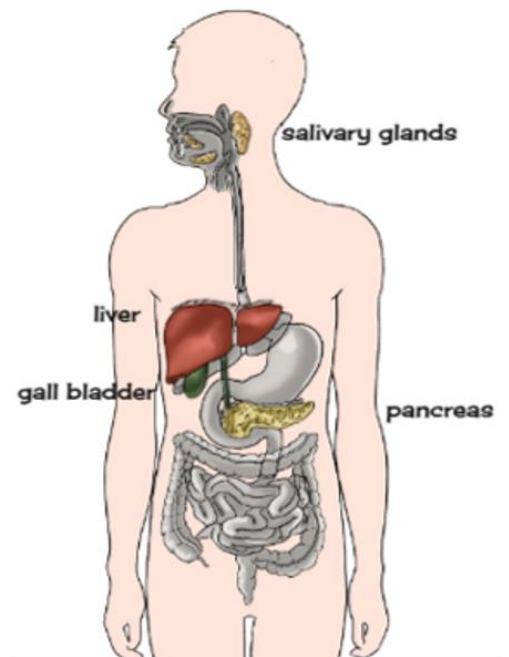
3.- THE ACCESORY GLANDS - Match each accesory gland to the correct information.

SALIVARY GLANDS

GALL BLADDER

LIVER

PANCREAS



- 1 it is a long organ**
- 2 it is the largest accesory gland.**
- 3 it produces bile**
- 4 it stores bile**
- 5 they produce saliva**
- 6 it produces pancreatic juices**
- 7 this enzyme helps break down food before it reaches our stomach**
- 8 this enzyme facilitates the digestion and the absorption of lipids**
- 9 these juices help digest proteins, fats, and carbs; it produces insuline**
- 10 It has many functions: synthesize proteins, store vitamins and minerals ...**

ANSWER KEY

1.- Name the 10 parts of the digestive system

1. Mouth and pharynx (or throat)
2. Salivary glands
3. Epiglottis
4. Esophagus
5. Liver
6. Gall bladder
7. Stomach
8. Pancreas
9. Small intestine
10. Large intestine

2.- The digestive tract

1. **PHARYNX:** a cavity shared by the respiratory and the digestive systems
2. **EPIGLOTTIS:** a small, flexible cartilage that prevents food from reaching the respiratory tract
3. **ESOPHAGUS:** muscular tube that contracts in a synchronized fashion to move food down
4. **STOMACH:** the internal walls have folds that secrete the gastric juices

SMALL INTESTINE:

5. It is about 6 metres long
6. It has 3 parts: duodenum, jejunum and ileum
7. It breaks down food and absorbs nutrients

LARGE INTESTINE:

8. it is about 1.5 metres long
9. It has 3 parts: cecum, colon, rectum
10. the waste solidifies until it is evacuated

3.- The accessory glands

SALIVARY GLANDS:

1. they produce saliva
2. this enzyme helps break down food before it reaches our stomach

GALL BLADDER:

3. it stores bile
4. this enzyme facilitates the digestion and the absorption of lipids

LIVER:

5. it produces bile
6. it is the largest accessory gland.
7. It has many functions: synthesize proteins, store vitamins and minerals ...

PANCREAS:

8. it is a long organ
9. it produces pancreatic juices
10. they help digest proteins, fats, and carbs; it produces insulin