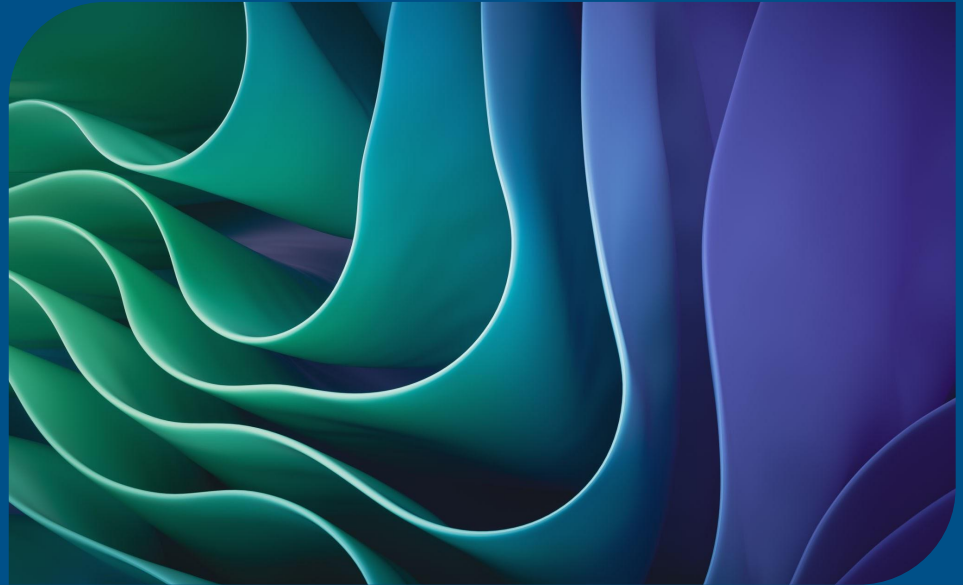


Radioactivity

Vocabulary in English!

With Gracie



Types of Radiation

Alpha (α)

- 2 protons + 2 neutrons, positive charge

Beta (β)

- Electrons, negative charge

Gamma (γ)

- Pure energy, no mass, no charge

Types of Radiation

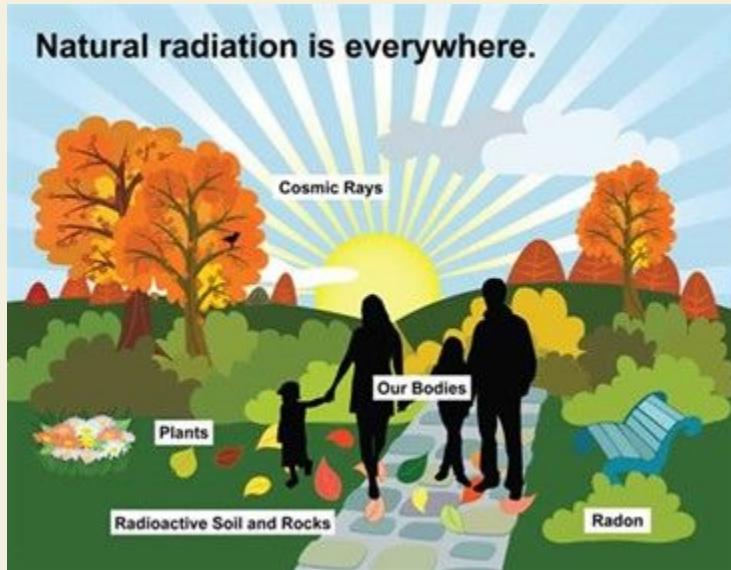


Type	Symbol	Charge	Mass (amu)
Alpha particle	${}^4_2\text{He}$	2+	4.015062
Beta particle	${}^0_{-1}\beta$	1-	0.0005486
Positron	${}^0_{+1}\beta$	1+	0.0005486
Gamma ray	γ	0	0

Natural vs Artificial Radiation

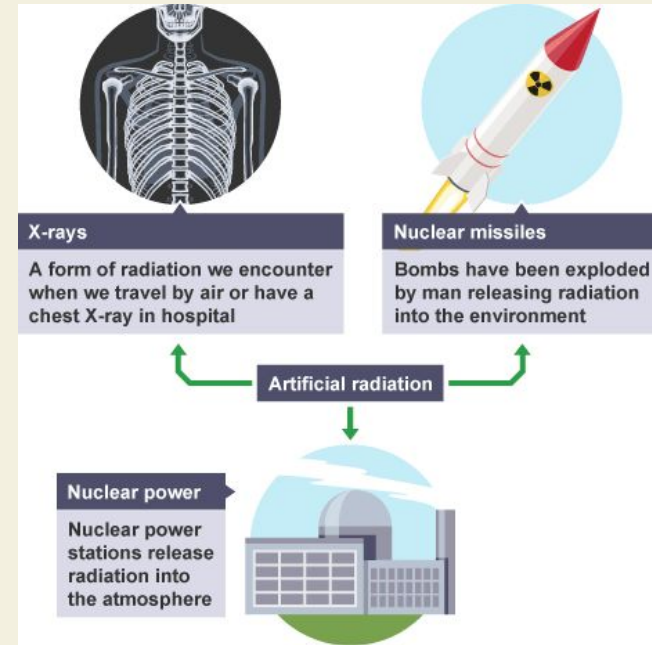
Natural ($\frac{2}{3}$ of exposure)

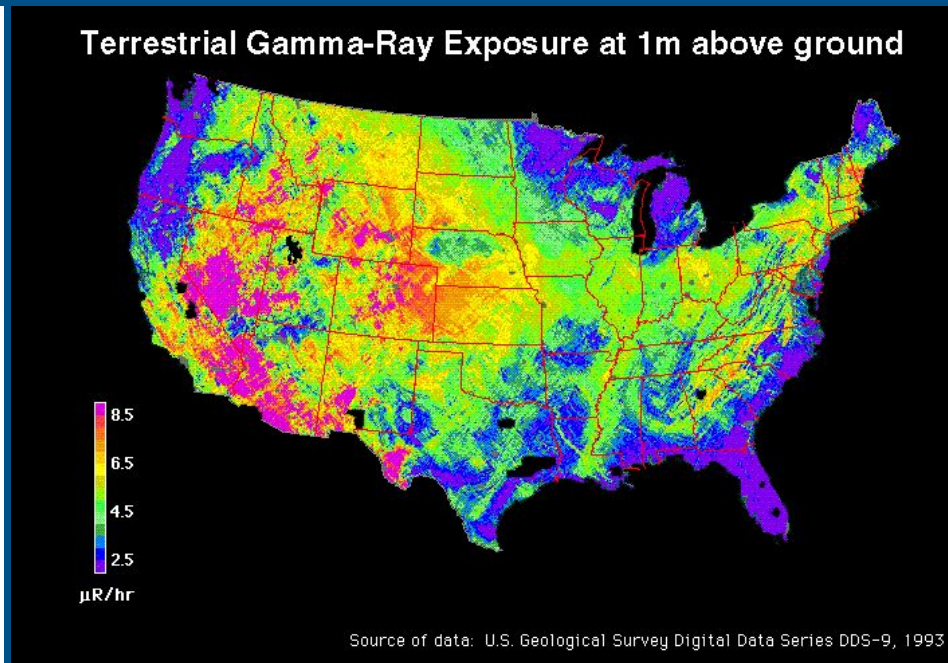
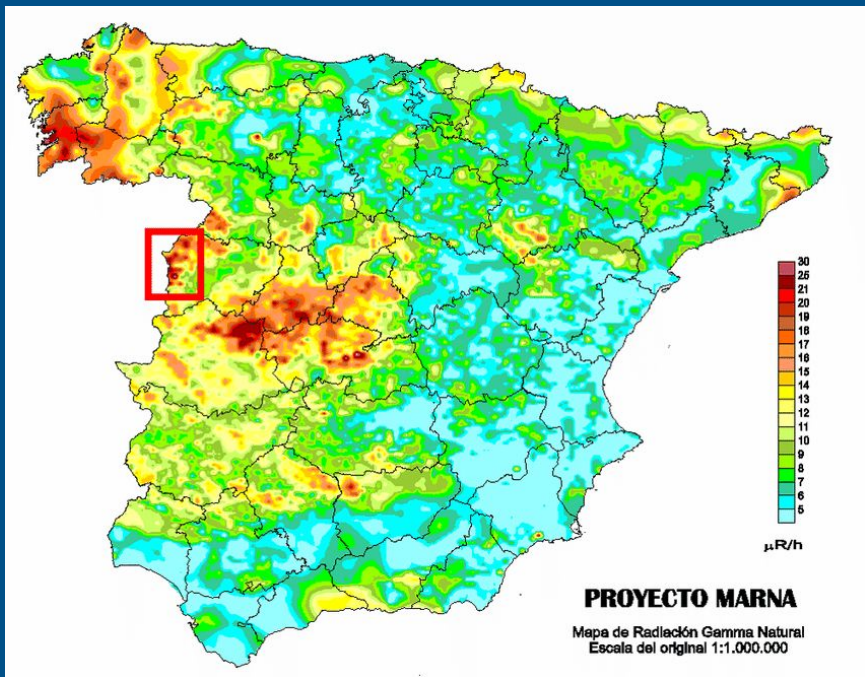
- From the Earth/soil
- From Space



Artificial

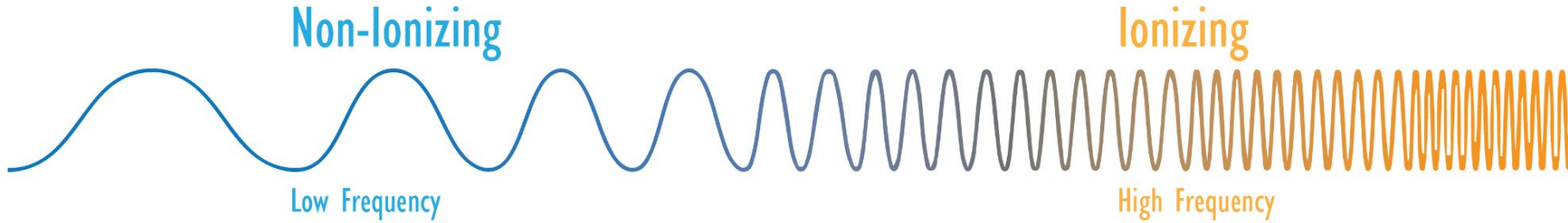
- Man-made





KAHOOT!

Electromagnetic Spectrum



Visible Spectrum

