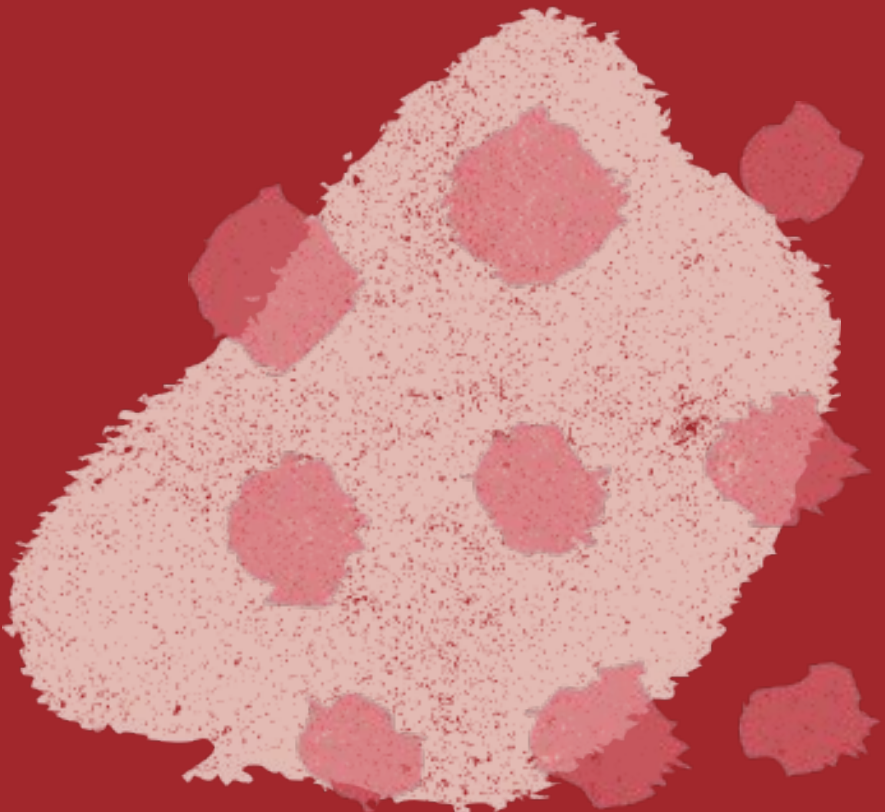
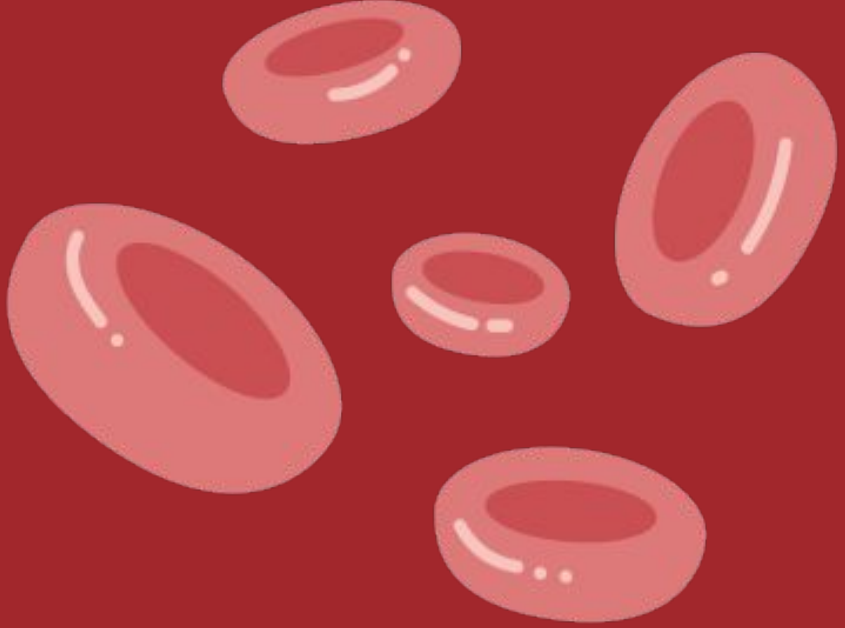
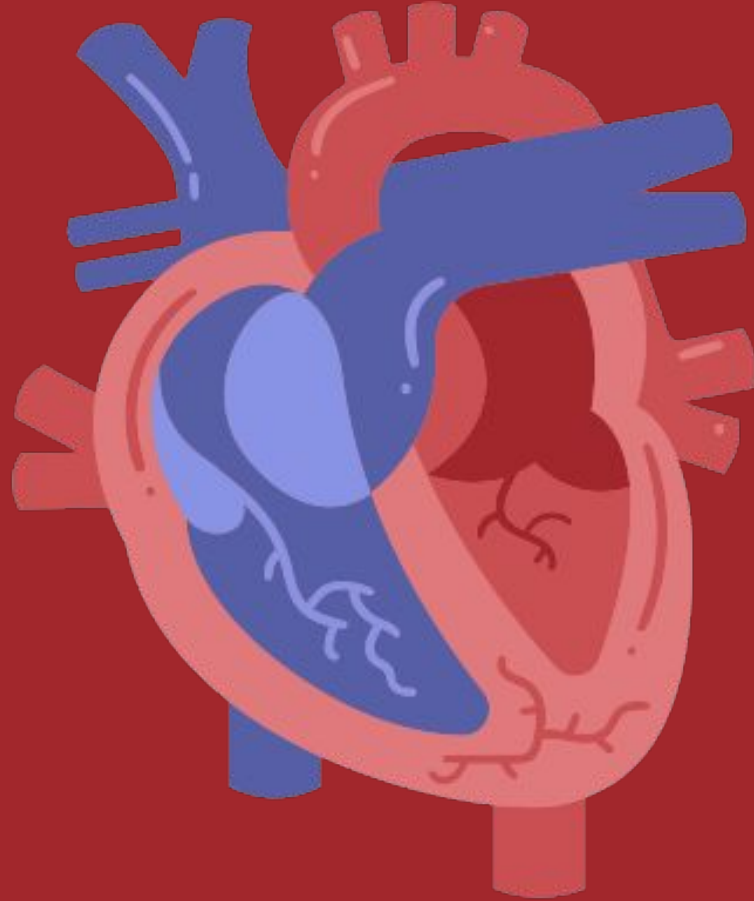


THE CIRCULATORY SYSTEM

With Gracie



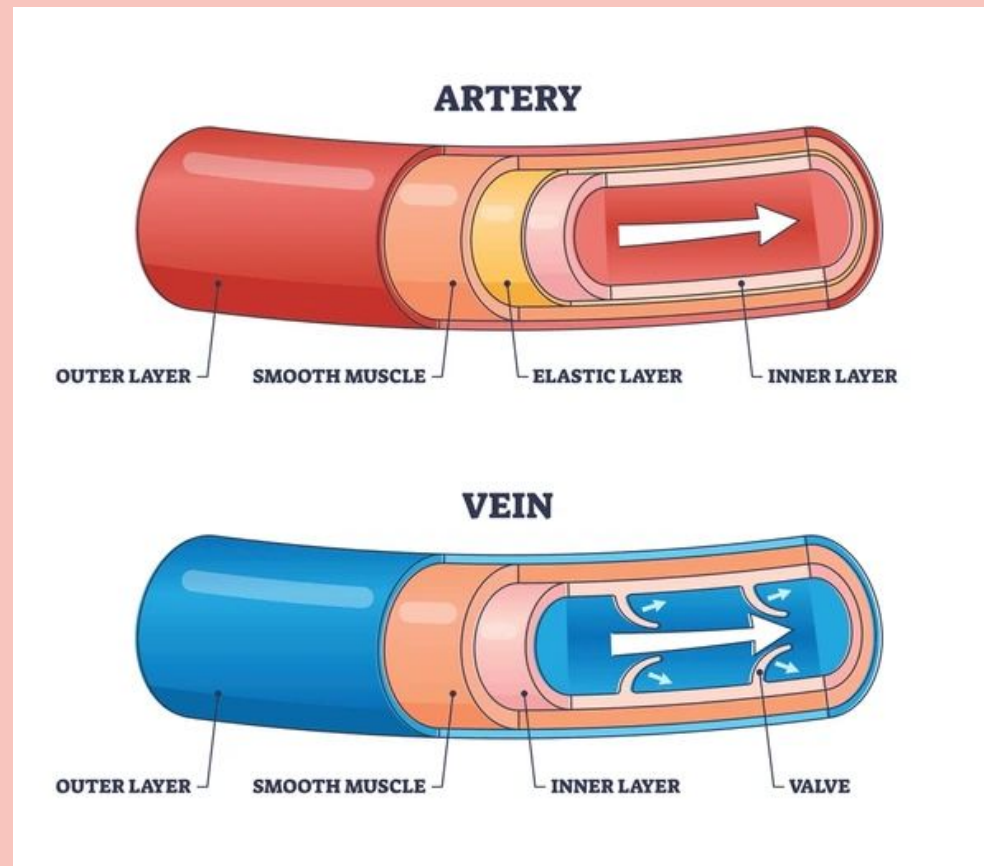
Blood Vessels

Capillaries

Connect Arteries and Veins

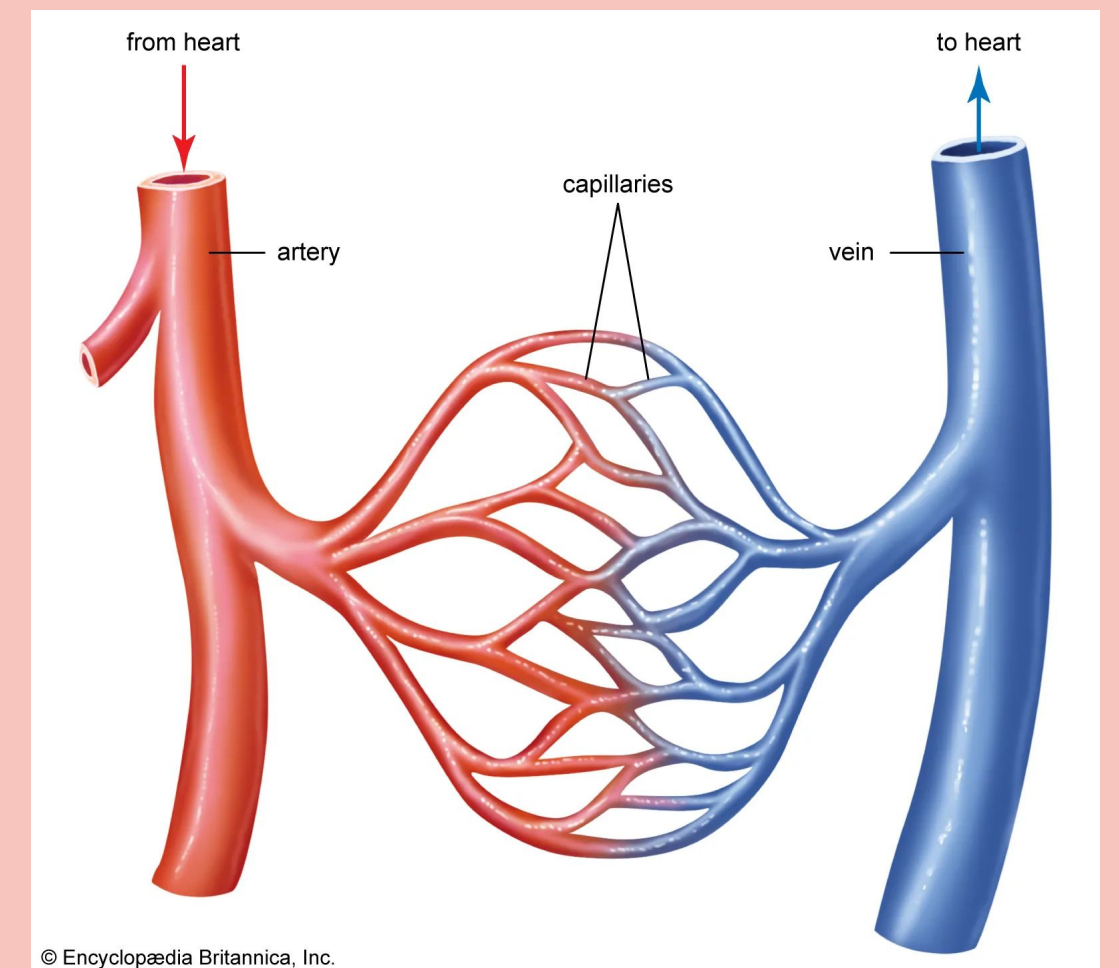
Arteries

Heart → Organs
Out



Veins

Organs → Heart
In



© Encyclopædia Britannica, Inc.

Take your pulse!

Ideal: 60-100 ppm (pulse per minute)



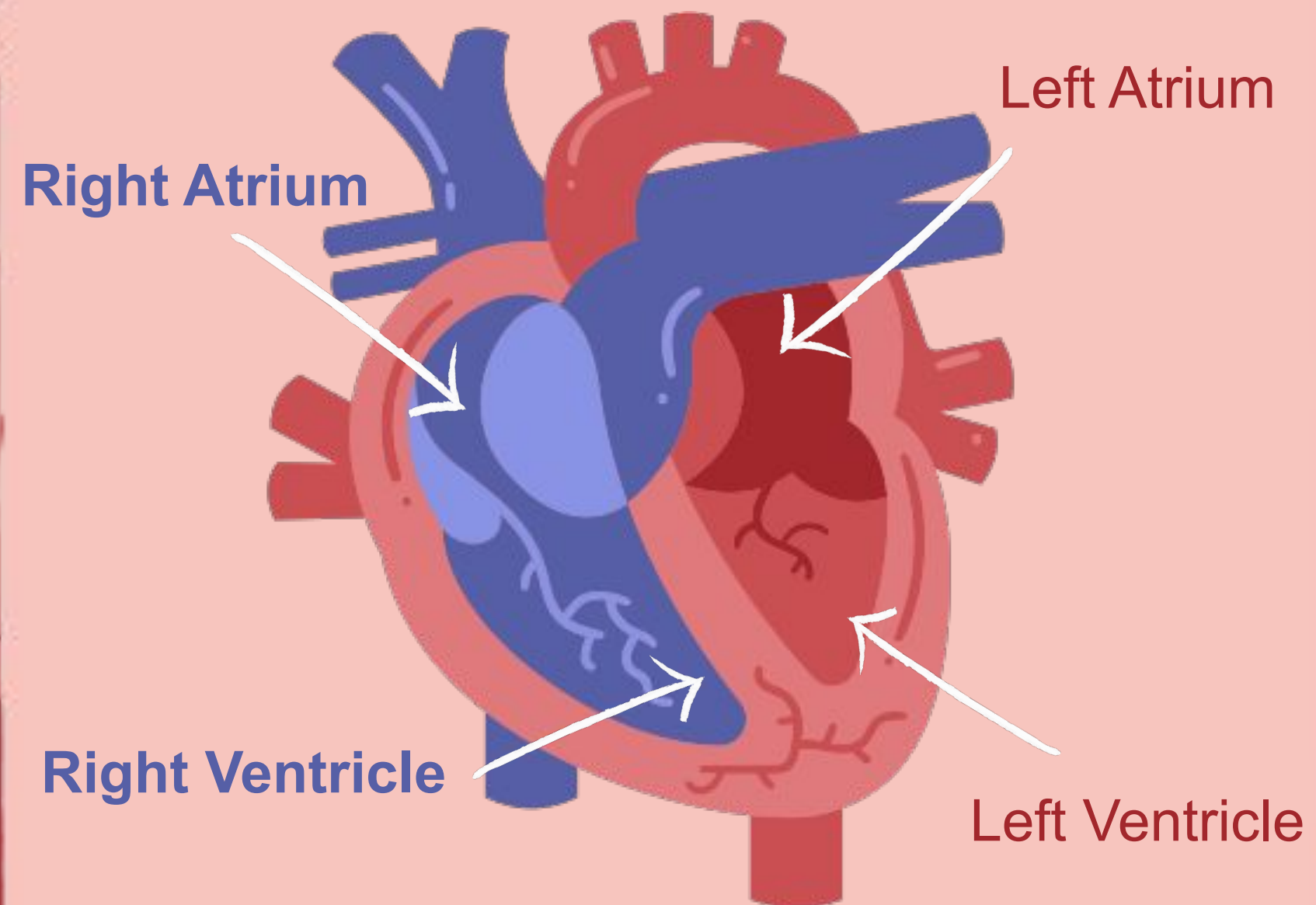
Count for 30 seconds, then multiply x2!



THE HEART

Four Chambers:

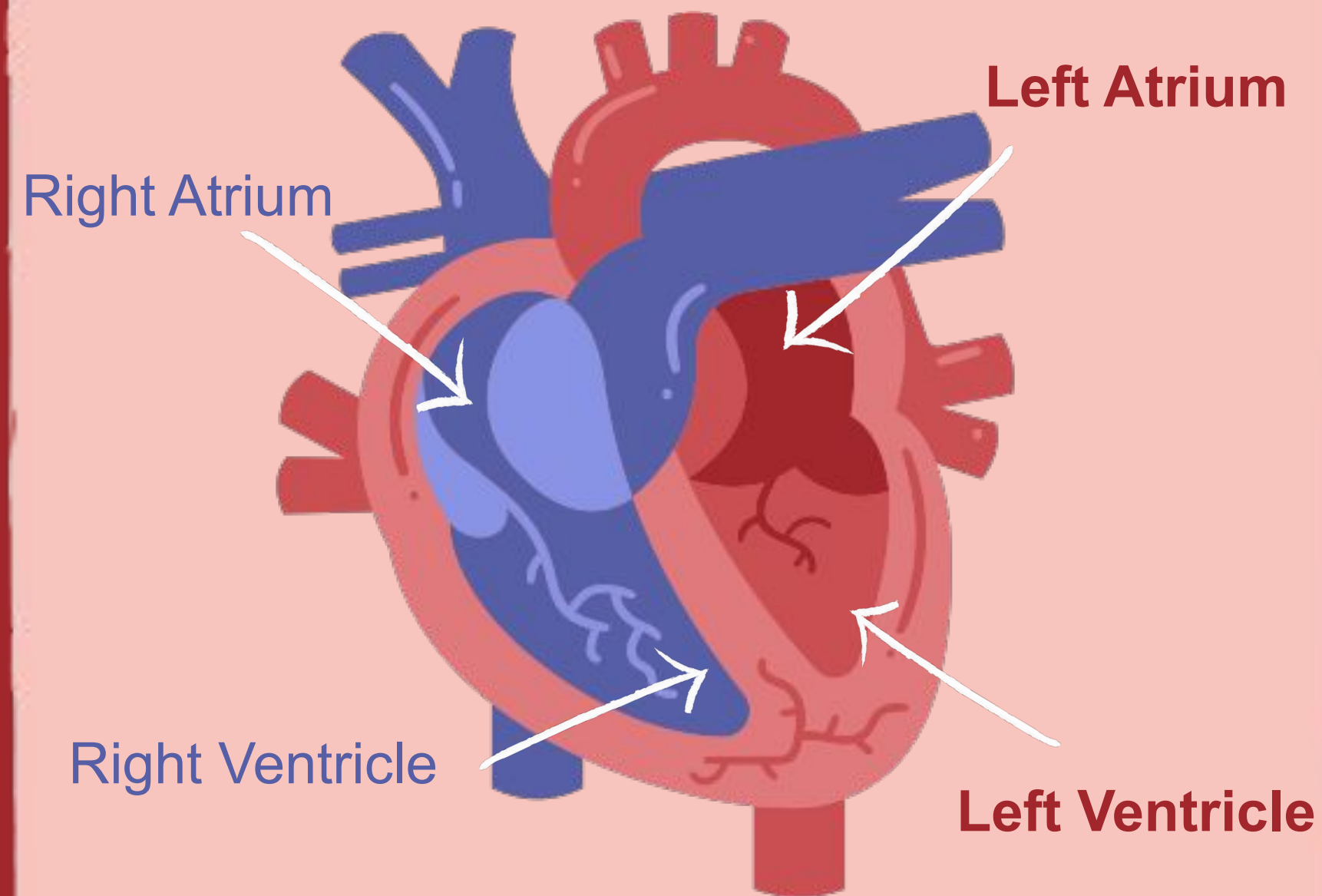
- **Right Atrium**
 - Brings oxygen-poor blood to the Right Ventricle
- **Right Ventricle**
 - Brings oxygen-poor blood to lungs



THE HEART

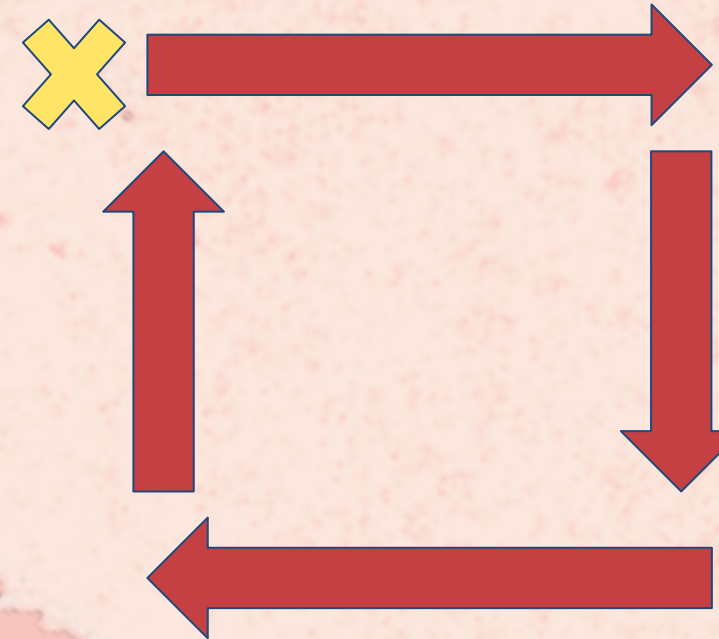
Four Chambers:

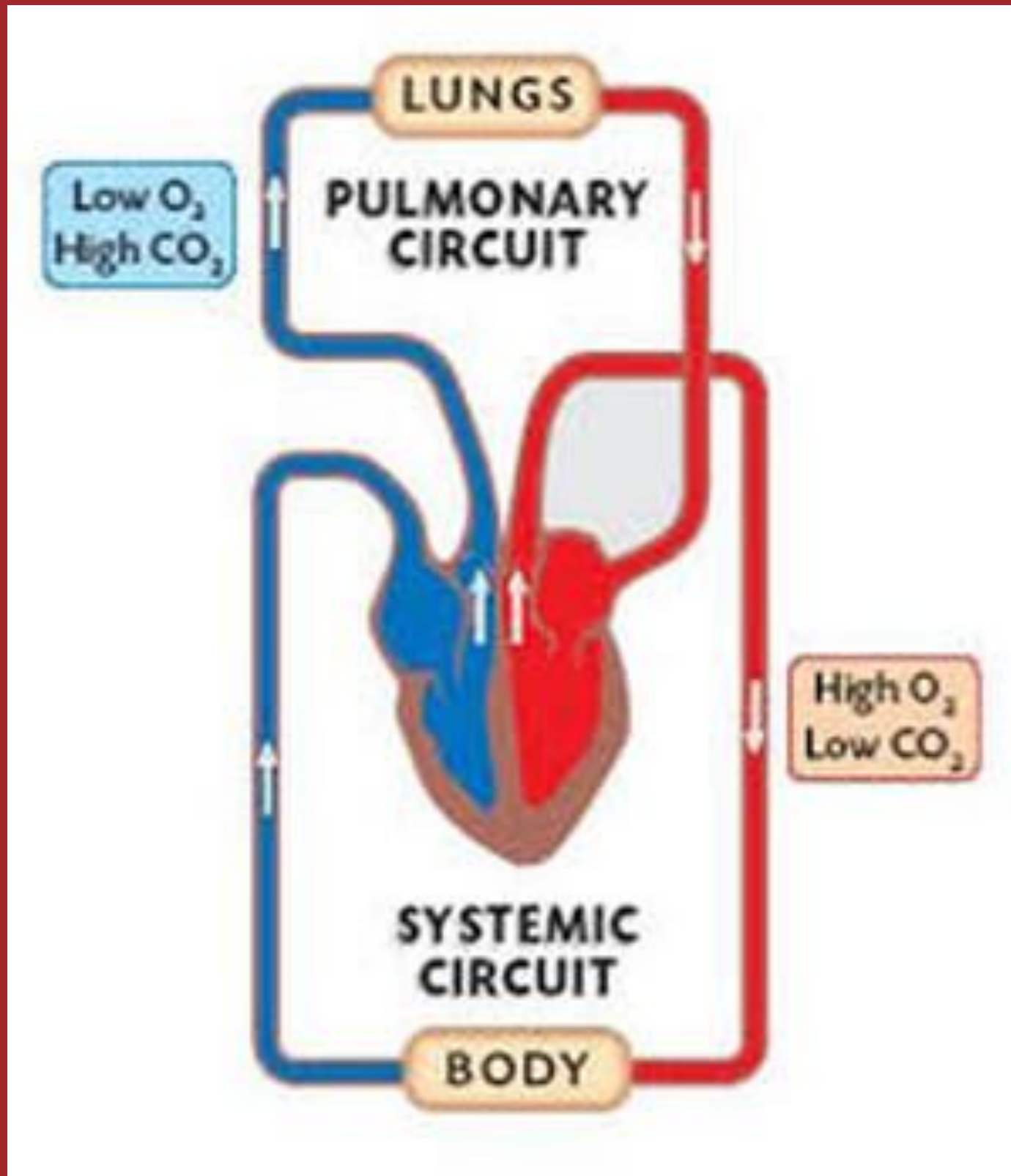
- **Left Atrium**
 - Receives oxygen-rich blood from lungs, brings to left ventricle
- **Left Ventricle**
 - Gives oxygen-rich blood to body



What is a circuit?

**Starts and ends at the
same place**





Pulmonary Circuit and Systemic Circuit



Image Sources

<https://www.shutterstock.com/image-vector/artery-vs-vein-structure-compare-d-600nw-2048821757.jpg>

<https://search-static.byjusweb.com/question-images/byjus/uploads/2/6/3/0/26307509/6887923.jpg>

